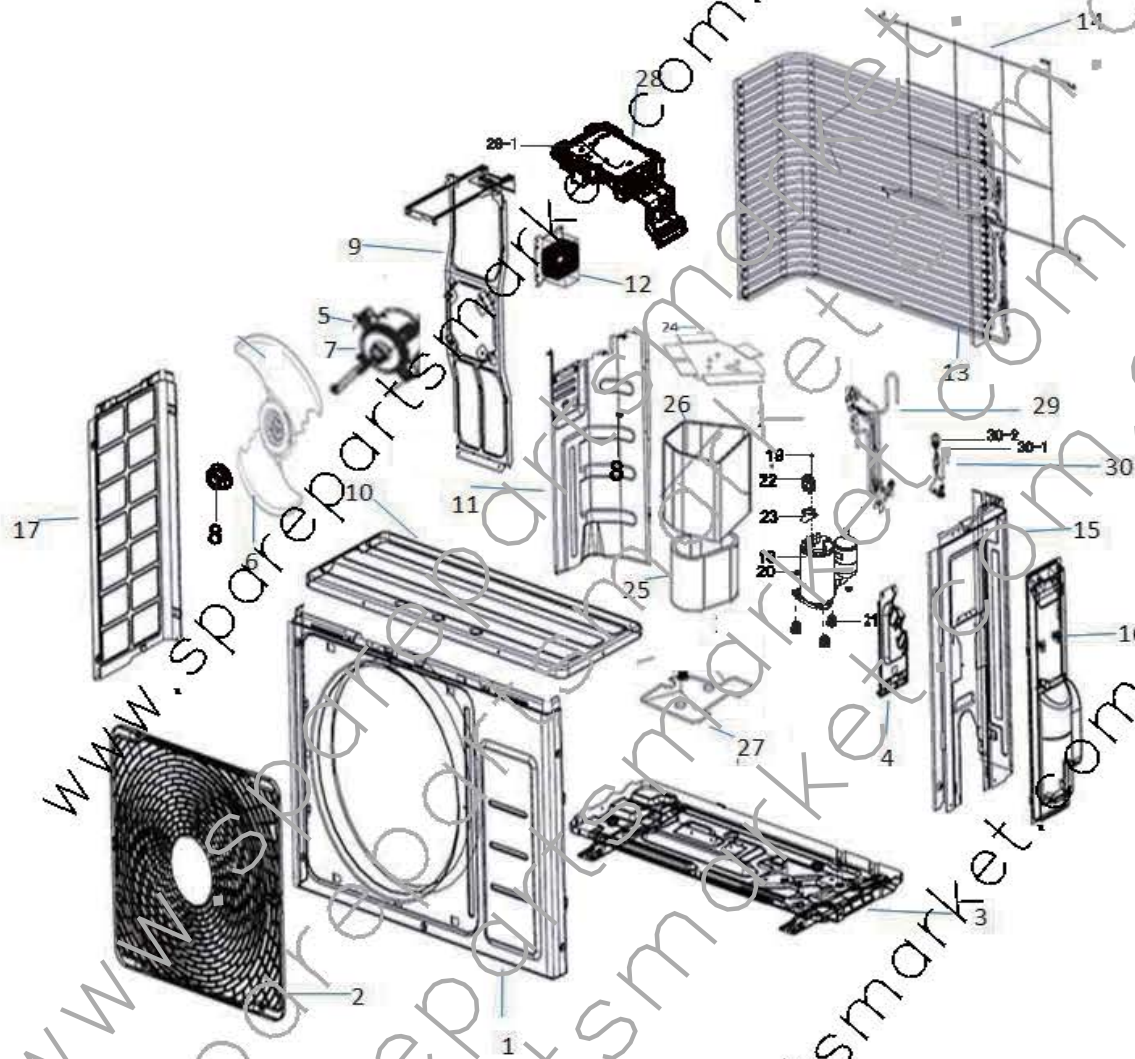


5-2 Outdoor Unit



■ Parts List

NO.	Code	Description	Specification	Qty	SA/ANA
				AQV12KWA XXSA	
1	DB90-05752A	ASSY CABI FRONT-COATING	ASSY	1	SA
2	DB63-02588A	GUARD FAN	PP	1	SA
3	DB90-06226A	ASSY-BASE OUT	ASSY	1	SA
4	B90-05738A	ASSY BRACKET-VALVE	ASSY	1	SA
5	DB31-00564A	MOTOR FAN	ASSY	1	SA
6	DB94-02657A	ASSY FAN-PROPELLER	ASSY	1	SA
7	6009-001729	SCREW-SPECIAL	M5, L26, ZPC(WHT)	4	SNA
8	DB60-30020A	NUT-HEXAGON FLANGE	M6, Zn-NI, CW	1	SNA
9	DB90-06219D	ASSY BRACKET MOTOR	ASSY	1	SA
10	DB90-05736A	ASSY CABINET-UPPER	ASSY	1	SA
11	DB94-02998B	ASSY PARTITION	ASSY	1	SA
12	DB27-00041B	COIL CHOKE-REACTOR	5mH, 10%, 10A	1	SA
13	DB96-14917A	ASSY COND	ASSY	1	SA
14	DB90-06221A	ASSY-SCREEN COND BAR	ASSY	1	SA
15	DB90-05751A	ASSY CABI RH-COATING	ASSY	1	SA
16	DB90-05740A	ASSY COVER-VALVE	ASSY	1	SA
17	DB90-05749A	ASSY CABI LF-COATING	ASSY	1	SA
18	UG9T115FUJQSS	COMPRESSOR	RCP, 39, F, R410A	1	SA
19	6021-001142	NUT-HEXAGON FLANGE	M5, ZPC(YEL)	1	SNA
20	DB60-30028A	SCREW-HEX	M8, -, ZPC(WHT)	3	SNA
21	DB99-01063A	ASSY-GROMMET	ASSY	3	SA
22	DB63-02310A	COVER TERMINAL	N1250, 5VA	1	SA
23	DB63-00817B	GASKET	EPDM RUBBER	1	SA
24	DB63-02859A	FELT-SIDE TOP	FELT+PVC	1	SA
25	DB63-02858A	FELT-COMP	FELT	1	SA
26	DB63-02857A	FELT-SIDE	FELT+PVC	1	SA
27	DB63-02864A	FELT-COMP BASE	FELT	1	SA
28	DB93-10960A	ASSY CONTROL OUT	ASSY	1	SA
28-1	DB93-10952A	ASSY PCB MAIN-OUT	ASSY	1	SA
29	DB96-14948A	ASSY-VALVE 4WAY	ASSY	1	SA
30	DB96-14976A	ASSY-VALVE EEV	ASSY	1	SA
30-1	DB62-03916A	VALVE-EXPANSION BODY	FUJIKOKI ϕ 1.4	1	SNA
30-2	DB62-03964A	VALVE EXPAN-COIL	FUJIKOKI 6-PIN	1	SNA