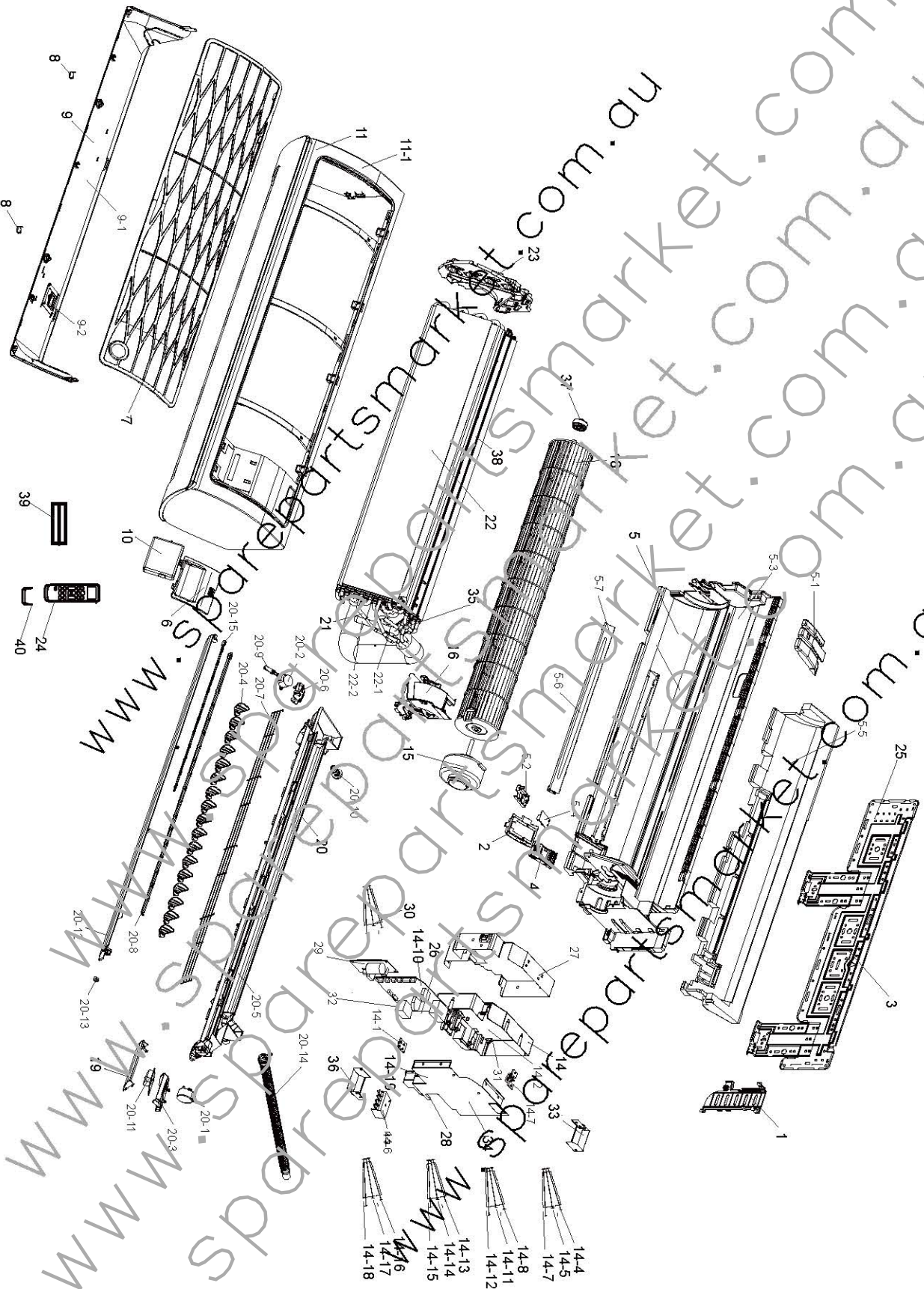


INDOOR UNIT



Parts List (04 FRAME PART LIST)

Exploded Views and Parts List

Level	Parts Code	Parts Description	Spec.	Quantity	Service
1	DB61-05853A	HOLDER-PIPE	A3050, F-RAC-04, HIPS, DA SILV	1	SA
2	DB63-03495A	COVER-SPI	A3050, F-RAC-04, HIPS, -, BLACK, H	1	SNA
3	DB90-07732A	ASSY HANGER	A3050 F-RAC-03, 04, 09, H228.9	1	SA
4	DB93-09679A	ASSY-SPI SLIM COMPACT	+2.95±0.15kV, -3.5±	1	SA
5	DB94-04149A	ASSY BACK BODY	AR12FSSSBWKNNSA, SSEC	1	SA
5-1	DB61-05849A	HOLDER	A3050, F-RAC-03/04/05, HIPS, BLACK,	1	SA
5-2	DB61-05854A	CASE PCB-REMOCON	A3050, F-RAC-05, HIPS, -,	1	SNA
5-3	DB61-05824A	BODY BACK	A3050 F-RAC-04, ABS, T2.3, BLACK	1	SNA
5-4	DB92-02874A	ASSY PCB SUB	RECEIVER, A3050, 24*40	1	SA
5-5	DB62-11534A	SEAL CUSHION-BODY	EPS, WHITE	1	SNA
5-6	DB90-07769A	ASSY CASE-SPI	A3050, F04	1	SNA
6	DB63-03494A	COVER PANEL-SUB	A3050, F-RAC-04, HIPS, T2	1	SA
7	DB63-03522A	FILTER-PRE	A3050, F-RAC-04, ABS, DA, WHITE	1	SA
7-1	DB94-04357A	ASSY FILTER-PRE	AR12FSSSBWKNNSA, SSEC	1	SA
8	DB67-01404A	CAP-SCREW	A3050, F-RAC-04, HIPS, T2.0, PH-8	2	SA
9	DB90-07762A	ASSY COVER PANEL	AR12FSSSBWKNNSA, F04, SSEC	1	SNA
9-1	DB63-03488A	COVER PANEL	F-RAC-04, HIPS, T2.2, -, DA SILV	1	SA
9-2	DB64-03045A	BUTTON POWER	A3050, PC, MILK-WHITE	1	SA
10	DB90-07763A	ASSY-WIFI KIT	AR18FSSSBWK/SA, SSEC	1	SA
11	DB92-02888A	ASSY PANEL FRONT	AR12FSSSBWKNNSA, F04, Good	1	SA
11-1	DB64-02972A	GRILLE INLET	A3050 F-RAC-04, GOOD1, ABS, DA	1	SA
11-2	DB92-02889A	ASSY PANEL-SUB	AR12FSSSBWKNNSA, F04, SSEC	1	SA
12-1	DB90-07861A	ASSY PLATE-MIDDLE	AR09FCSDAWKNAF, F03, SSE	1	SA
12-2	DB61-05966A	PLATE CONTROL-UP	A3050 F-RAC-03, GI-SGCC,	1	SA
14	DB93-14255A	ASSY CONTROL IN	HP, INV, 12K, AR12FSSSBWK/S	1	SNA
14-1	DB61-05812A	PLATE CONTROL-SUB	A3050 F-RAC-01/03/04/0	1	SA
14-2	DB61-05826A	CASE CONTROL-IN	A3050, F-RAC-03/F04, HIPS	1	SNA
14-3	DB93-14206A	ASSY CONNECTOR WIRE-DC SIGNAL	4, 2095, 26,	1	SA
14-4	DB93-14210A	ASSY CONNECTOR WIRE-DC SIGNAL	5, 1007, 26,	1	SA
14-5	DB93-14212A	ASSY CONNECTOR WIRE-DC SIGNAL	6, 1007, 26,	1	SA
14-6	DB65-00326A	TERMINAL BLOCK	4P, PBT, 4-TAB, 4-SCREW, 36.4	1	SA
14-7	DB93-14207A	ASSY CONNECTOR WIRE-DC SIGNAL	3, 1007, 24,	1	SA
14-8	DB93-14238A	ASSY CONNECTOR WIRE-COMM	2, 1007, 22, BLU, Y	1	SA
14-9	DB61-05871A	HOLDER-WIRE	A3050, ABS, EBONY BLACK, VON-SSE	1	SNA
14-10	DB92-02873A	ASSY PCB MAIN	INDOOR, INVERTER, A3050, 98.5	1	SC
14-11	DB93-14202A	ASSY CONNECTOR WIRE-POWER	2, 1015, 22, BRN,	1	SA
14-12	DB93-14208A	ASSY CONNECTOR WIRE-DC SIGNAL	3, 1007, 26,	1	SA
14-13	DB93-14205A	ASSY CONNECTOR WIRE-DC SIGNAL	5, 1007, 26,	1	SA
14-14	DB93-14211A	ASSY CONNECTOR WIRE-DC SIGNAL	6, 2095, 26,	1	SA
14-15	DB93-14204A	ASSY CONNECTOR WIRE-DC SIGNAL	5, 2095, 26,	1	SA
14-16	DB93-14209A	ASSY CONNECTOR WIRE-DISPLAY	1, 2095, 26, R	1	SA
14-17	DB92-02861A	ASSY MODUL	STD #3-SMPS, A3050, 11W (5V 35	1	SA
14-18	DB93-14245A	ASSY CONNECTOR WIRE-EARTH	1, 1015, 16, YEL/	1	SA
14-19	DB90-07859A	ASSY PLATE-CONTROL	AR09FCSDAWKNAF, F03, SS	1	SA
15	DB31-00636A	MOTOR BLDC FAN	ND-310-25-8A(AL), 1450, 310	1	SA
16	DB63-03492A	COVER MOTOR	A3050, F-RAC-04, ABS, -, NATURA	1	SA
17	DB94-00455B	ASSY-RUBBER BEARING	WW-PJT, CR, BLK SSEC	1	SC
18	DB94-01550E	ASSY FAN CROSS	A3050, 95.6PI, BLACK	1	SA
19	DB90-07851A	ASSY COVER DISPLAY	AR12FSSSBWKNNSA, ASSY	1	SNA
19-1	DB64-02991A	WINDOW DISPLAY	A3050, F-RAC-03/04, PC, T1.2	1	SA
20	DB94-04148A	ASSY TRAY DRAIN	AR12FSSSBWKNNSA, SSEC	1	SA
20-1	DB31-00369D	MOTOR STEP	DB31-00369D, 35BYJ46, 1.47, 100P	1	SA
20-2	DB31-00371A	MOTOR STEP	1step 5.625°/64, DC12V, 650gf.c	1	SA
20-3	DB61-05827A	CASE-DISPLAY	F01/F03/F04/F05, HIPS, T2.0, B	1	SA
20-4	DB61-05846A	BLADE V	F-RAC-03/04/05, ABS, TWILIGHT BLUE	17	SA

■ Parts List (04 FRAME PART LIST)

20-5	DB63-03487A	TRAY DRAIN	F-RAC-04, HIPS, T2, 0, BLACK	1	SNA
20-6	DB63-03493A	COVER MOTOR-SUB	A3050, F-RAC-04, HIPS, T2,	1	SA
20-7	DB63-03530A	GUARD-SCREEN	A3050, F-RAC-04, MSWR-SWRM, BL	1	SNA
20-8	DB66-01726A	LINK BLADE-A	A3050, F-RAC-04, POM, BLACK	1	SNA
20-9	DB66-01727A	LINK BLADE-C	A3050, F-RAC-04, POM, NATURAL	1	SA
20-10	DB73-00180B	RUBBER-CAP DRAIN	all moel, NR, D22, 40, 40, R	1	SA
20-11	DB92-02877A	ASSY PCB DISPLAY	BETTER, BEST, A3050, 64*36	1	SA
20-12	DB92-02890A	ASSY BLADE H	AR12FSSSBWKNXA, SSEC	1	SA
20-13	DB61-03132A	HOLDER-BLADE OUT	HP-C180V, STS304, 0.5/W11	1	SNA
20-14	DB94-00458H	ASSY HOSE DRAIN	A3050-PJT, SSEC	1	SA
21	DB67-60030A	SPRING-SENSOR	WW2-PJT, STS301, 0.4, TO, 4, W2	2	SA
22	DB96-18999A	ASSY EVAP-TOTAL	AR12FSSSBWKNXA, SSEC	1	SA
22-1	DB96-18944A	ASSY TUBE EVAP IN	AR12FSSSBWKNXA, SSEC	1	SA
22-2	DB96-18945A	ASSY TUBE EVAP OUT	AR12FSSSBWKNXA, SSEC	1	SA
22-3	DB60-30010B	FASTENER-NUT FLARE	BRASS	1	SA
23	DB63-03510A	COVER EVAP	A3050 F-RAC-04, PP, T2, 0, -, BLAC	1	SA
24	DB93-14195F	ASSY WIRELESS REMOCON	RS-1, ENGLISH, 37, 0*	1	SA
25	DB61-05958A	HANGER-LINK	F-RAC-03/04, GI-SGCC, TO, 6	1	SA
26	4709-002176	W-LAN MODULE	SWL-B70F, 802.11n, 2.4GHz, BCM	1	SNA
27	DB61-05847A	CASE PCB	A3050 F-RAC-04, HIPS, -, BLACK, S	1	SA
28	DB63-03508A	COVER PCB	A3050 F-RAC-04, HIPS, -, BLACK, S8	1	SA
29	DB92-02875A	ASSY PCB SUB	WIFI DC-DC CONVERTER, A3050,	1	SA
30	DB93-14203A	ASSY CONNECTOR WIRE-POWER	2, 1015, 22, BRN,	1	SA
31	DB61-05963A	SUPPORT-CONTROL	A3050, F-RAC-03, HIPS, F74	1	SA
32	DB95-05163A	ASSY THERMISTOR IN	103HW, 6P, 400/400/400,	1	SA
33	DB61-05965A	PLATE CONTROL-UP	A3050 F-RAC-03, GI-SGCC,	1	SA
34	DB61-05959A	PLATE CONTROL-RIGHT	A3050, F-RAC-03/04, GI	1	SA
35	DB67-01431A	RUBBER PIPE	AR12FSSSBWKNXA, SIR, 8, NONFLAM	1	SA
36	DB61-06079A	PLATE CONTROL-MIDDLE	A3050 F-RAC-04, GI-S	1	SNA
37	DB94-40007B	ASSY-BEARING	GI-PJT, SSEC	1	SNA
38	DB61-05829A	HOLDER EVAP	A3050, F-RAC-04, ABS, T2, 0, BLA	1	SNA
39	4301-000121	BATTERY-MN	1.5V, R03, 10.5x44.5m, 7.5g/AAA	2	SNA
40	DB61-04899A	HOLDER-REMOCON	BORACAY, ABS, T2, 50, 7, 67, 8,	1	SA