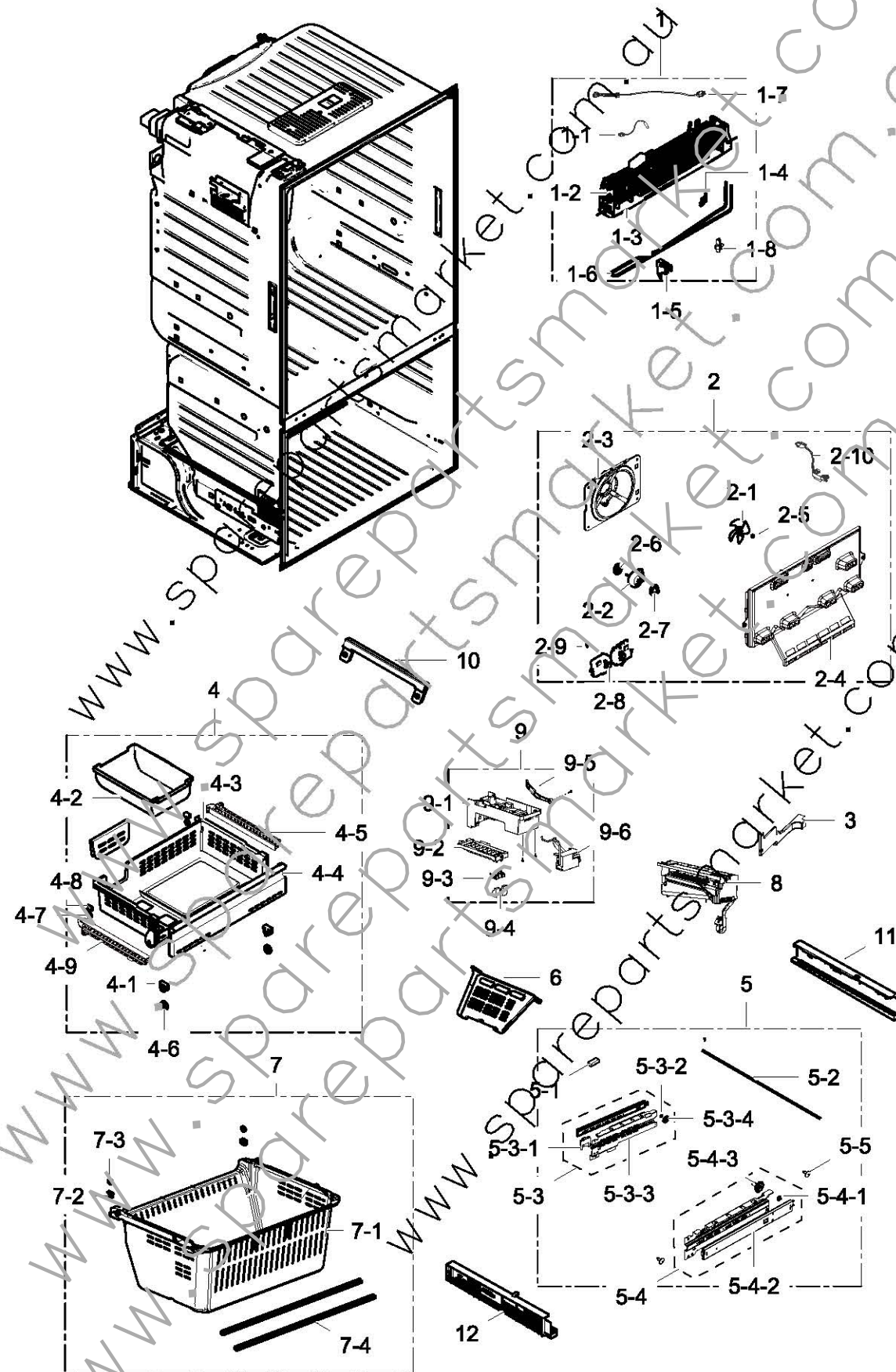


1. Freeze

Exploded View



Parts List

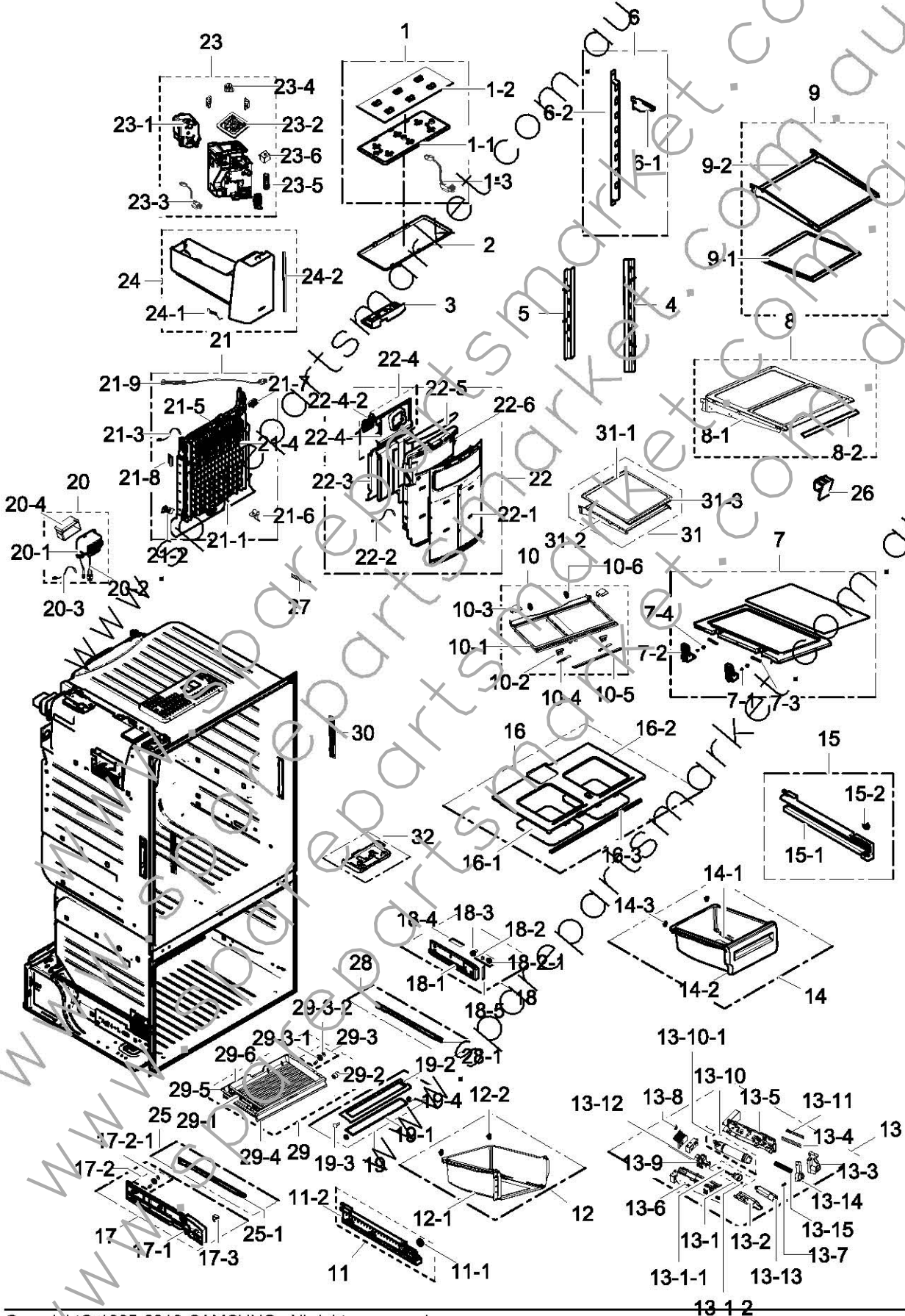
No.	Lvl.	Loc.	Material Code	Description & Specification	SNA	Qty.
1	2	RF011	DA96-00632D	ASSY EVAP-FRE; AW2-14,AW2CD-14,FC,230V,2	SA	1
1-1	3	RK716	DA32-10104N	SENSOR TEMP; PX-41C,AW3,-40~1105V,R-D	SA	1
1-2	3	RF326	DA59-00401A	EVAP FRE; AW2 ND-PTJ,PIN,AL	SNA	1
1-3	3	RO363	DA61-04225B	PLATE-DRAIN FRE; AW2 ND-PJT,GL-SAZCC,T0.3	SNA	1
1-4	3		DA61-06182A	FIXER-SENSOR FRE; AW3-PJT,PP,NATURAL,PH44	SA	1
1-5	3		DA61-06630A	PLATE-EVAP FRE MID; AW3-PJT,AL,T0.8	SNA	1
1-6	3		DA47-00318D	HEATER METAL SHEATH 230V, 230W	SA	1
1-7	3	RR341	DA47-00301B	THERMO FUSE-ASSY; HERMES,250V,10A,109~110	SA	1
1-8	3	RK201	DA61-05845A	FIXER-HEATER FRE AW3-PJT,PBT,NTR	SA	1
2	2	RF005	DA97-08541A	ASSY COVER EVAP-FRE; AW2-ND	SA	1
2-1	3	RR030	DA71-00124A	FAN-AX100W4CC-T1; -,TD-PJT,ABS,-,-	SA	1
2-2	3	RR087	DA31-00146H	MOTOR BLDC; DREF5020LC,2950,12V,175mA,2.1	SC	1
2-3	3	RF120	DA61-03183A	CASE-MOTOR FRE; AW-PJT,BUBBLE PP,-,-,NT	SA	1
2-4	3	RR237	DA63-05126A	COVER-EVAP FRE; AW1,PP,NTR	SNA	1
2-5	3	RR053	DA61-20128A	SPRING ETC-FAN; STS304,PI8.8,ID7.8,OD9.8,	SA	1
2-6	3	RO138	DA63-01146A	GROMMET-MOTOR REAR; A TOP,NBR,BLACK,BLDC	SA	1
2-7	3	RO545	DA63-01808A	GROMMET MOTOR, BLDC,NBR,BLACK,H20	SA	1
2-8	3	RF455	DA63-01809B	COVER MOTOR-BLDC; AT,PP,NTR,CNTK-P-100,PP	SA	1
2-9	3	RR066	DA63-40167A	GROMMET-COVER CHIL; SILICON,L16,WHITE	SA	2
2-10	3	RR928	DA96-00042D	ASSY W/HARNESS-MOTOR; AD-PJT(BLDC),F-Fan	SA	1
3	2		DA63-06894A	COVER-WIRE HARNESS ICE; AW4,HIPS,COOL WHI	SA	1
4	2		DA97-07638P	ASSY TRAY-FRE UP; AW2-14	SA	1
4-1	3	RF155	DA61-04154A	FIXER-ROLLER TRAY FRE UPP; AW-PJT,PA,1.8,	SA	2
4-2	3	RM095	DA61-01300A	CASE-ICE CUBE; AW2 TIM,PP,COOL WHITE(SC-0	SA	1
4-3	3	RI691	DA63-05038A	TRAY-FRE UPP; AW2 TIM,HIPS,COOL WHITE(SC-	SA	1
4-4	3	RF522	DA63-04252C	COVER-TRAY FRE UPP A; AW2,HIPS,COOL WHITE	SA	1

No.	Lvl.	Loc.	Material Code	Description & Specification	SNA	Qty.
4-5	3	RF263	DA61-05185A	GUIDE-TRAY FRE UPP R; AW2 CD,ABS,HF-0660I	SA	1
4-6	3	RF151	DA66-00554A	ROLLER-TRAY FRE UPP; AW-PJT,POM,NATURAL,P	SA	2
4-7	3	RR069	DA66-10104A	ROLLER-FRE; POM,-,-,D22,-,-,	SC	2
4-8	3	RR250	DA71-20277A	FIXER-ROLLER; SR-62,NY-66,T2.0,-	SA	2
4-9	3	RF264	DA61-05186A	GUIDE-TRAY FRE UPP L; AW2 CD,ABS,HF-0660I	SA	1
5	2		DA97-14383A	ASSY.HANGER-LOW; AW2-14,ASS'Y	SA	1
5-1	3	RY478	DA61-03769B	MAGNET; SVETA,MAGNET,T5,W15,L18	SA	1
5-2	3	RI244	DA66-00437B	SHAFT-GEAR; AW2,SM25C,715.1,-,-,BLACK E	SA	1
5-3	3	RI171	DA97-13661A	ASSY RAIL-SLIDE LOW L; AW2-PJT,SCP1	SA	1
5-3-1	4	RO151	DA34-00047B	SWITCH PRESSURE; AW-PJT,ABS,COOL WHITE	SA	1
5-3-2	4	RR040	DA61-03154A	FIXER GEAR; AW-PJT,POM,-,NTR,-	SA	1
5-3-3	4	RD094	DA61-04437A	HANGER-RAIL LOW L; AW-PJT,SECC1,T1.6,COOL	SA	1
5-3-4	4	RR382	DA66-00751A	GEAR-RAIL L; AW-PJT,POM,NTR	SA	1
5-4	3	RG144	DA97-13662A	ASSY RAIL-SLIDE LOW R; AW2-PJT,SCP1	SA	1
5-4-1	4	RR040	DA61-03154A	FIXER-GEAR; AW-PJT,POM,-,NTR,-	SA	1
5-4-2	4	RD095	DA61-04439A	HANGER-RAIL LOW R; AW-PJT,SECC1,T1.6,COOL	SA	1
5-4-3	4	RR381	DA66-00750A	GEAR-RAIL R; AW-PJT,POM,NTR	SA	1
5-5		RU495	DA67-02795C	CAP-SHAFT HOLE; AW3,ABS,HG-0760GP,COOL WH	SA	1
6	2		DA61-04253B	GUIDE-FRE; AW2-14,PP,HB,BJ750,COOL WHITE	SA	1
7	2		DA97-06276E	ASSY TRAY DRAWER; AW2-14	SA	1
7-1	3		DA63-04251B	TRAY DRAWER-BOX; AW2-14,PP,COOL WHITE	SA	1
7-2	3	RR071	DA71-20145A	FIXER-ROLLER; -,PP,-,	SC	2
7-3	3	RR069	DA66-10104A	ROLLER-FRE; POM,-,-,D22,-,-,	SC	2
7-4	3	RI181	DA61-03160A	REINF-DRAWER BOX; AW-PJT,SHP1,T2.0,BLACK	SA	1
8	2	RM061	DA97-12317C	ASSY ICE MAKER; AW1-12,230V,141W, FUSE 2E	SA	1
9	2	RM073	DA97-07603B	ASSY SUPPORT-ICE MAKER; AW4	SA	1
9-1	3		DA61-05227A	SUPPORT-ICE MAKER FRE; AW2 CD,HIPS,HG-176	SC	1
9-2	3	RM088	DA63-02284B	TRAY ICE; AD,PP,NTR	SA	1
9-3	3	RR060	DA63-02183A	COVER-SENSOR; AD,PP,T1.0,-,-,-,WHITE,-	SA	1
9-4	3	RM027	DA61-01800A	FIXER-SENSOR(ICE MAKER); AD,URETHANE,-,-,	SC	1
9-5	3	RR189	DA61-05435A	GUIDE-ICE FULL; AW,ABS,COOL WHITE	SA	1

No.	Lvl.	Loc.	Material Code	Description & Specification	SNA	Qty.
9-6	3	RM061	DA59-00294B	ICE MAKER-ASS'Y; NTGN,DC 12V,-,-,-,-	SC	1
10	2		DA61-09790A	FIXER-REAR; AW3-14,HIPS,COOL WHITE,HB,S83	SA	1
11	2	RI224	DA63-03415A	COVER-RAIL LOW R; AW-PJT,ABS,-,-,-,-,CO	SA	1
12	2	RI223	DA63-03414A	COVER-RAIL LOW L; AW-PJT,ABS,-,-,-,-,CO	SA	1

2. Fridge

Exploded View



Parts List

No.	Lvl.	Loc.	Material Code	Description & Specification	SNA	Qty.
1	2	RI246	DA97-12606A	ASSY CASE LAMP-REF; AW4	SA	1
1-1	3	RI544	DA61-08236A	CASE LAMP-REF; AW4,HIPS,COOL WHITE,S834S1	SNA	1
1-2	3		DA41-00676G	ASSY LAMP-LED; 1,FR-4,30*20,WHITE,SMAW250	SA	6
1-3	3		DA96-00961A	ASSY W/HARNES-LED REF; ALL 12VDC,UL,IEC,	SA	6
2	2	RG025	DA63-07816A	COVER LAMP-REF; AW3-14,GPPS,HB,147F	SA	1
3	2	RI211	DA61-04285A	GUIDE-FRENCH; AW2-PJT,ABS+PC,HR-1008B,COQ	SA	1
4	2		DA61-08632B	ANGLE SHELF; FDSR,CR-SPCC,COOL WHITE,CR,S	SA	1
5	2		DA61-08696B	ANGLE SHELF; FDSR,CR-SPCC,COOL WHITE,CR,S	SA	1
6	2	RI288	DA97-12633A	ASSY ANGLE-SHELF REF MID; AW4,2.5,447.5,C	SA	1
6-1	3	RI303	DA61-05895A	SUPPORT-HANGER; AW3 EGI-SECC,T1.6 COOL WH	SNA	1
6-2	3		DA61-08264A	ANGLE-SHELF REF MID; AW4,SPCC,2.5,477.5,C	SNA	1
7	2		DA97-15005A	ASSY SHELF FOLDER-REF; FDSR	SA	1
7-1	3		DA61-03705A	SPRING ETC-HINGE SHELF; AW BEST,STS304	SA	2
7-2	3		DA61-08215A	BRACKET-HINGE SHELF; AW4,PC,COOL WHITE	SNA	2
7-3	3		DA66-00483A	SHAFT-HINGE-SHELF; AW-PJT,STS304,38,4.0,-	SA	2
7-4	3		DA66-00482A	ROLLER-HINGE-SHELF; AW-PJT,POM,6,WHT	SA	2
8	2	RI286	DA97-08463B	ASSY SHELF-QUICK SPACE; AW3	SA	1
8-1	3		DA97-14348A	ASSY HANGER; AW3-14,FOLDER SHELF	SA	1
8-2	3		DA64-03040F	TRIM SHELF QUICK SPACE; AW3,STAINLESS-ST	SA	1
9	2		DA97-08461C	ASSY SHELF SLIDE-REF; FDSR,ASSY SHELF SLI	SA	1
9-1	3	RU006	DA97-08538A	ASSY SHELF SLIDE WELD; AW3,Welding shelf	SA	1
9-2	3		DA97-15044A	ASSY HANGER; FDSR,HANGER SLIDE	SA	1
10	2	RI149	DA97-08402A	ASSY COVER-VEG REF; AW3,REINF T2.0	SA	1
10-1	3	RI579	DA63-01390A	COVER-VEG REF; AW3-PJT,ABS,COOL WHITE(SC-	SNA	1
10-2	3	RI262	DA64-03209A	KNOB-HUMIDITY; AW3-PJT,ABS,NTR,Chromium P	SA	2
10-3	3	RI208	DA61-03166A	FIXER-COVER VEG; AW,POM,WHITE,HB,K300	SA	2
10-4	3	RI154	DA66-00718A	LEVER-HUMIDITY; AW3,HIPS,COOL WHITE(SC-03	SA	2

No.	Lvl.	Loc.	Material Code	Description & Specification	SNA	Qty.
10-5	3	RI209	DA61-04292A	REINF-COVER VEG; AW2-PJT,SHP1,T2.0	SA	1
10-6	3	RR069	DA66-10104A	ROLLER-FRE; POM,-,-,D22,-,-,	SC	2
11	3		DA97-11292A	ASSY RAIL VEG-L; OPUS1,COOL WHITE(SC-0274	SA	1
11-1	4	RR069	DA66-10104A	ROLLER-FRE; POM,-,-,D22,-,-,	SC	1
11-2	4		DA61-07327A	RAIL-VEG L; OPUS1,HIPS,COOL WHITE(SC-0274	SNA	1
12	2		DA97-08438D	ASSY CASE VEG-LEFT; AW3-14,ASSY	SA	1
12-1	3		DA61-05876B	CASE-VEG L; AW3,GPPS,NTR	SA	1
12-2	3		DA97-14447A	ASSY ROLLER; AW3-14,ASSY	SA	2
13	2		DA97-14485B	ASSY CASE FILTER; AW2-14,220V	SA	1
13-1	3	RI006	DA97-08006D	ASSY CASE-FILTER; AW3,WHITE	SA	1
13-1-1	4	RK440	DA62-02429G	PIPE-WATER LINE; AW3,LLDPE,ID4.2,6.35,L97	SA	1
13-1-2	4	RR094	DA61-04522A	CLIP-FITTING LOCK; AW,POM,-,-,1/4inch	SA	1
13-2	3	RI536	DA29-00019A	FILTER WATER; SEDA	SNA	1
13-3	3	RI537	DA63-05406B	COVER-FILTER TANK; AW3,HIPS,COOL WHITE (S	SA	1
13-4	3	RK396	DA41-00519S	ASSY LAMP LED; 2*21BA,FR-4,65*10,WHITE,MG	SA	1
13-5	3	RU014	DA61-07496A	CASE-FILTER TANK L; AW2-11,HIPS,COOL WHIT	SA	1
13-6	3	RU015	DA61-07497A	CASE-FILTER TANK R; AW2-11,HIPS,W433.9,L1	SA	1
13-7			DA60-00258C	FITTING-TUBE; TUBE FITTING A,PP,1/4'- (1/4	SA	1
13-8	3		DA62-03103A	TUBE-FITTING T; AW33,POM,GRAY	SA	1
13-9	3	RO312	DA62-04030B	VALVE WATER-3WAY; AW1-12,SCP1,1.0~8.0K,PU	SA	1
13-10	3	RI043	DA97-11283D	ASSY TANK WATER; AW33,PP,NTR,Hose:2.25m	SNA	1
13-10-1	4	RR094	DA61-04522A	CLIP-FITTING LOCK; AW,POM,-,-,1/4inch	SA	1
13-11	3	RI539	DA63-05403B	COVER-LED FILTER; AW3,GPPS,NTR	SA	2
13-12	4	RK424	DA62-01368B	PIPE-WATER LINE(LLDPE,-,BLUE, I.D4.2, O.	SNA	2
13-13	3	RI538	DA63-05407A	TRAY-WATER FILTER; AW3,HIPS,DA WHITE(W92K	SA	1
13-14	3	RI540	DA67-02505B	CAP-FILTER TANK; AW3,GPPS,NTR	SA	1
13-15	3	RU024	DA63-05928A	COVER-SEAL LED; AW,PET,T0.5,TRANSPARENT	SA	2
14	2		DA97-08437D	ASSY CASE VEG-RIGHT; AW3-14,ASSY	SA	1
14-1	3		DA61-05875B	CASE-VEG R; AW3,GPPS,NTR	SA	1
14-2	3	RY525	DA63-05412B	COVER VEG-FRONT R; AW3,GPPS,NTR	SNA	1
14-3	3		DA97-14447A	ASSY ROLLER; AW3-14,ASSY	SA	2
15	3		DA97-11291A	ASSY RAIL VEG-R; OPUS1,COOL WHITE(SC-0274	SA	1

No.	Lvl.	Loc.	Material Code	Description & Specification	SNA	Qty.
15-1	4		DA61-07326A	RAIL-VEG R; OPUS1,HIPS,COOL WHITE(SC-0274	SNA	1
15-2	4	RR069	DA66-10104A	ROLLER-FRE; POM,-,-,D22,-,-,	SC	1
16	2	RI195	DA97-08417A	ASSY SHELF-PANTRY; AW2-ND	SA	1
16-1	3		DA64-02235A	WINDOW-SHELF PANTRY; AW-PJT BEST,GPPS,2.5	SNA	2
16-2	3	RI205	DA67-02519A	SHELF-PANTRY; AW2-ND PJT,HIPS,COOL-WHITE(SA	1
16-3	3	RI204	DA61-03174A	REINE-SHELF PANTRY; AW-PJT,SECC1,T1.2,Bla	SA	1
17	2	RI190	DA97-11541A	ASSY COVER-RAIL PANTRY L; AW2-11	SA	1
17-1	3	RI197	DA63-06521A	COVER-RAIL PANTRY L; AW2-11,HIPS,COOL-WHI	SA	1
17-2	3	RF166	DA97-05932A	ASSY-ROLLER A; AW2-PJT	SA	1
17-2-1	4	RF161	DA61-04008A	GUIDE WASHER; AW2-PJT,STS304,0.5,12.0,-,-	SA	1
17-3	3	RI207	DA61-03176A	SUPPORT-ROLLER PANTRY; AW-PJT,PVC,BLK	SA	1
18	2		DA97-11542D	ASSY COVER RAIL PANTRY-RIGHT; AW2-14,ICE	SA	1
18-1	3	RI198	DA63-06520A	COVER-RAIL PANTRY R; AW2-11,HIPS,COOL-WHI	SA	1
18-2	3	RI207	DA61-03176A	SUPPORT-ROLLER PANTRY; AW-PJT,PVC,BLK	SA	1
18-2-1	4	RF161	DA61-04008A	GUIDE WASHER; AW2-PJT,STS304,0.5,12.0,-,-	SA	1
18-3	3	RI207	DA61-03176A	SUPPORT-ROLLER PANTRY; AW-PJT,PVC,BLK	SA	1
18-4	3		DA92-00600A	ASSY MODULE; PANTRY DISPLAY;AW2-14,96*14.	SA	1
18-5	3	RD112	DA64-02573D	INLAY-CONTROL; AW2-14,PC,ICE BLUE,T0.3	SA	1
19	2	RI192	DA97-06327A	ASSY COVER-SLIDE PANTRY; AW2-PJT,-,-,-,-,-	SA	1
19-1	3	RI199	DA63-04280A	COVER-SLIDE PANTRY A; AW2-PJT,SAN,HB,NATU	SNA	1
19-2	3	RI200	DA63-04279A	COVER-SLIDE PANTRY B; AW2-PJT,ABS,HB,COOL	SNA	1
19-3	3	RR066	DA63-40167A	GROMMET-COVER CHIL; SILICON,L16,WHITE	SA	2
19-4	3	RR069	DA66-10104A	ROLLER-FRE; POM,-,-,D22,-,-,	SC	2
20	2	RI292	DA97-06324C	ASSY COVER-MOTOR DAMPER; AW2-PJT,NTR,0.5W	SA	1
20-1	3	RF423	DA63-04274B	COVER-MOTOR DC DAMPER; AW2-PJT,PP,NTR	SA	1
20-2	3		DA31-00071G	MOTOR DC-DAMPER; DC12V,MAX 60mA,AW	SA	1
20-3	3	RI270	DA32-00006R	SENSOR TEMP-PANTRY; PX-41C, 502AT,AW-PJT,	SA	1
20-4	3	RI228	DA62-01380A	INSULATION-MOTOR DC DAMPER; AW-PJT,FOAM-P	SA	1
21	2	RI016	DA96-00660B	ASSY EVAP-REF; AW3(DOM),PIN,230V/100W	SC	1
21-1	3	RF389	DA61-06186A	PLATE-DRAIN REF; AW3-PJT,AL,T0.4	SC	1

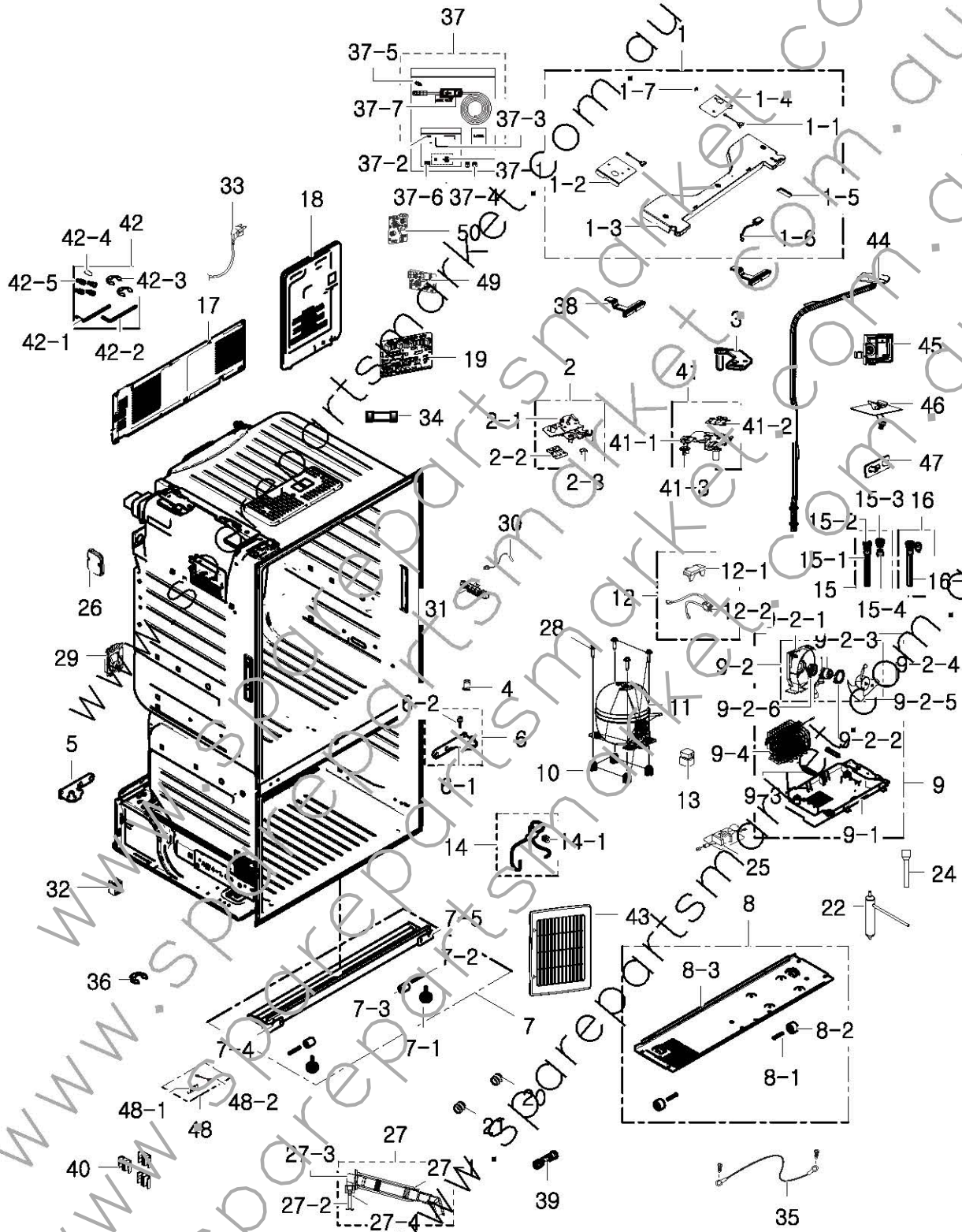
No.	Lvl.	Loc.	Material Code	Description & Specification	SNA	Qty.
21-2	3	RK205	DA61-05835B	FIXER-HEATER REF; AW3-PJT,PBT,NTR	SA	2
21-3	3	RK716	DA32-10104N	SENSOR TEMP; PX-41C,AW3,-40~1105V,R-D	SA	1
21-4	3	RI496	DA59-00399A	EVAP REF; AW3,AL	SNA	1
21-5	3		DA47-00244T	HEATER METAL SHEATH; AC230V,AW3-PJT, REF,	SA	1
21-6	3	RR042	DA61-03644A	PLATE-EVAP HEATER; AW-PJT,AL,T0.7,-,-,-	SA	1
21-7	3	RK213	DA61-03683A	FIXER-SENSOR; AW-PJT,PP,-,NTR,FH-44N	SA	1
21-8	3	RF217	DA61-05160A	FIXER FUSE; CULLI_09,PP,NATURAL,HB,BJ750	SA	1
21-9	3	RR036	DA47-00301D	THERMO FUSE-ASSY; ARAM,250V,10A,109~110	SA	1
22	2	RI008	DA97-12608A	ASSY COVER EVAP-REF; AW4	SA	1
22-1	3	RI616	DA63-06863A	COVER EVAP-REF; AW4,PP,COOL WHITE	SNA	1
22-2	3	RI139	DA32-00010C	SENSOR TEMP-R; -CUBEN,-,5V,-,-,R SENSOR,	SA	1
22-3	3		DA62-06634A	INSULATION EVAP-REF REAR; AW4,FOAM-PS,NTR	SNA	1
22-4	3		DA97-12815B	ASSY CASE MOTOR-REF; AW4,ASSY	SA	1
22-4-1	4		DA61-08187A	CASE MOTOR-REF; AW4,ABS,GRAY,HB,CNTK A-20	SNA	1
22-4-2	4		DA31-00287A	MOTOR BLDC-BOX FAN; 33507%,12V,1.92W,-4	SC	1
22-5	3		DA62-03680A	SEAL-COVER REF UPP; AW4,OJC-3000,WHITE,T7	SNA	1
22-6	3	RG149	DA62-03638A	INSULATION EVAP-REF; AW4,FOAM-PS,NTR	SNA	1
23			DA97-12540C	ASSY CASE-FAN AUGER MOTOR; AW1-12,230V/50	SA	1
23-1	3	RF434	DA31-00105L	MOTOR GEARED AC AUGER; ISG3240SSH-1.2/0/2	SA	1
23-2	3	RW547	DA31-00070E	MOTOR DC-BOX FAN; 26063L-04W-S39,3600rpm,	SA	1
23-3	3		DA96-00682D	ASSY W/HARNES-AUGER MOTOR; ALL,FREE VOLT	SA	1
23-4	3	RS711	DA61-02513A	GROMMET-FAN; USP,NBR,T1.5,W14,L14,ID15,OD	SA	4
23-5	3	RR109	DA61-20140A	SPRING ETC-SOLENOID; SR-S7180,STS04,PI7.	SA	1
23-6	3	RO088	DA74-40151F	VALVE-SOLENOID; POM,CUBE-SN2,220-240[V],-	SA	1
24	2	RZ003	DA97-14474A	ASSY TRAY ICE; AW3-14,MAGNET TYPE	SA	1
24-1	3	RM039	DA61-20124D	SPRING ETC-DISPENSER; AW-BEST-GE-OEM,STS3	SA	1
24-2	3		DA63-07185A	GASKET-TRAY ICE BUCKET; AW4,PVC-SF,WHITE	SA	1
25	3	RI193	DA97-11538A	ASSY RAIL-PANTRY L; AW2-11	SA	1
25-1	4	RI202	DA61-07607A	RAIL-PANTRY L; AW2-11,SECC1,COOL WHITE	SC	1

Exploded Views and Parts List

No.	Lvl.	Loc.	Material Code	Description & Specification	SNA	Qty.
26	2	RF197	DA97-12654A	ASSY CAP-ANGLE; AW4,PP,COOL WHITE	SA	1
27	4	RK394	DA41-00519Q	ASSY LAMP LED; 3,CEM-1,170*10,WHITE,SMAW2	SA	2
28	3	RI194	DA97-11539A	ASSY RAIL-PANTRY R; AW2-11	SA	1
28-1	4	RI203	DA61-07601A	RAIL-PANTRY R; AW2-11,SECC1,COOL WHITE	SC	1
29	2	RI189	DA97-11540A	ASSY CASE PANTRY; AW2-11	SA	1
29-1	3	RI201	DA61-04290A	GUIDE-PANTRY; AW2-PJT,HIPS,COOL WHITE(SC-	SA	1
29-2	3	RI299	DA66-00580A	ROLLER-PANTRY; AW2-PJT,POM,-,-,NTR,-,-	SA	1
29-3	3	RF165	DA97-05931A	ASSY-ROLLER B; AW2-PJT,-,-,-	SA	2
29-3-1	4	RI317	DA66-00548A	ROLLER-RAIL; AW2-PJT,POM,19.0,-,-,-,N109-	SNA	1
29-3-2	4	RF161	DA61-04008A	GUIDE-WASHER; AW2-PJT,STS304,0.5,12.0,-,-	SA	1
29-4	3	RI545	DA63-04275B	COVER-PANTRY FRONT; AW2-PJT,SAN,NTR	SA	1
29-5	3	RI546	DA63-04276B	COVER-PANTRY TRIM; AW2-PJT,HIPS,COOL-WHIT	SA	1
29-6	3	RI196	DA61-07602A	CASE-PANTRY; AW2-11,HIPS,COOL-WHITE(SC-02	SA	1
30	2		DA63-07276A	COVER LAMP-LED SIDE; AW4,SAN,NTR	SA	2
31	2	RI037	DA97-14324A	ASSY SHELF-REF; AW3-14,FIXED SHELF	SA	1
31-1	3		DA67-03779A	SHELF-REF FIX; AW3-14,PP,COOL WHITE	SA	1
31-2	3		DA97-14322A	ASSY HANGER-RIGHT; AW3-14	SA	1
31-3	3		DA97-14323A	ASSY HANGER-LEFT; AW3-14	SA	1
32	2		DA97-14471A	ASSY CASE LOCK; AW3-14,MAGNET TYPE	SA	1

3. Cabinet

Exploded View



Parts List

No.	Lvl.	Loc.	Material Code	Description & Specification	SNA	Qty.
1	2	RO133	DA97-14978B	ASSY TOP TABLE; FDSR,INOX GRAY, 220~240V	SA	1
1-1	3	RK819	DA34-00043A	SWITCH REED-ASS'Y; 200VDC,1.5,-	SA	3
1-2	3	RO250	DA61-08227A	PLATE-COVER HINGE; AW4,GI-SGCC,T0.3	SA	1
1-3	3	RO930	DA64-04743A	TOP TABLE; FDSR,ABS,INOX GRAY	SNA	1
1-4	3		DA61-08884A	PLATE-COVER HINGE R; ROMANEE COTNI,G-SGC	SA	1
1-5	3		DA92-00650A	ASSY MODULE; DC VOLTAGE DOWN,FDSR, AW2,14	SA	1
1-6	3		DA96-00962D	ASSY WIRE HARNESS-TOP; FDR,220~240VAC,IEC	SA	1
1-7	3	RR094	DA61-04522A	CLIP-FITTING LOCK; AW,POM,-,1/4inch	SA	2
2	2	RO041	DA97-12573A	ASSY HINGE UPP-L; AW4,T3.0,BLACK	SA	1
2-1	3	RO129	DA61-08309A	HINGE-UPP L; AW4,PO-SPHC,T3.0,ELETRODEPOS	SA	1
2-2	3	RK777	DA63-59192A	SHIM-HINGE UPP; RD-PVC,- T1.0	SA	1
2-3	3	RO175	DA66-00950A	CAM-AUTO CLOSE L; AW4,POM,BLACK	SA	1
3	2	RO443	DA61-09968A	HINGE-UP; FDSR,PO-SRHC,T4.0,75 * 76 * 4E	SA	1
4	2	RY756	DA63-06410A	GROMMET HINGE-MID; AW3,POM,T2.0,W22.6,L23	SA	1
5	2	RO536	DA61-08318A	HINGE-MID L; AW4,ZN,T4.5,W127,L50,ZnDC 2	SA	1
6	2		DA97-14977A	ASSY HINGE-MIDDLE RIGHT; FDSR,ZnDC, 131.5	SA	1
6-1	3		DA61-09967A	HINGE-MIDDLE RIGHT; FDSR,ZN,T6.0,131.5 *	SNA	1
6-2	3	RR968	6011-001442	BOLT-SOCKET; M8,L15,ZPC(BLK),SCM435,4mm,F	SA	1
7	2		DA97-12556E	ASSY CAB. BOTTOM-FRONT; AW4-4D F/S,INOX G	SNA	1
7-1	3	RO100	DA61-00805F	FOOT-FRONT; REF-ALL,PP+MSWR10,BLACK,PP_S	SA	2
7-2	3	RH012	DA61-01920A	CASTER-RIVET; (ZPC),MSWR10,OD8.0,L58	SA	2
7-3	3	RO360	DA61-04702A	CASTER-FRONT; AW-PJT,PP,-,35,NTR,35,PP+TP	SA	2
7-4	3		DA63-06389E	COVER LEG-FRONT LEFT; AW4-4D,PP,INOX GRAY	SA	1
7-5	3		DA63-06405E	COVER LEG-FRONT RIGHT; AW4-4D,PP,INOX GRAY	SA	1
8	2	RO002	DA97-12557A	ASSY CHASSIS-COMP; AW4	SA	1
8-1	3	RR242	DA61-04703A	CASTER-REAR; AW-PJT,PP,-,35,NTR,35,PP+TPE	SA	2
8-2	3	RX039	DA66-00649A	SHAFT-CASTER; AW-PJT,MSWR10,L46,OD8.0,ZPC	SA	2
8-3	3	RO153	DA64-04152A	CHASSIS-COMP; AW4,SBHG1,T1.4	SNA	1

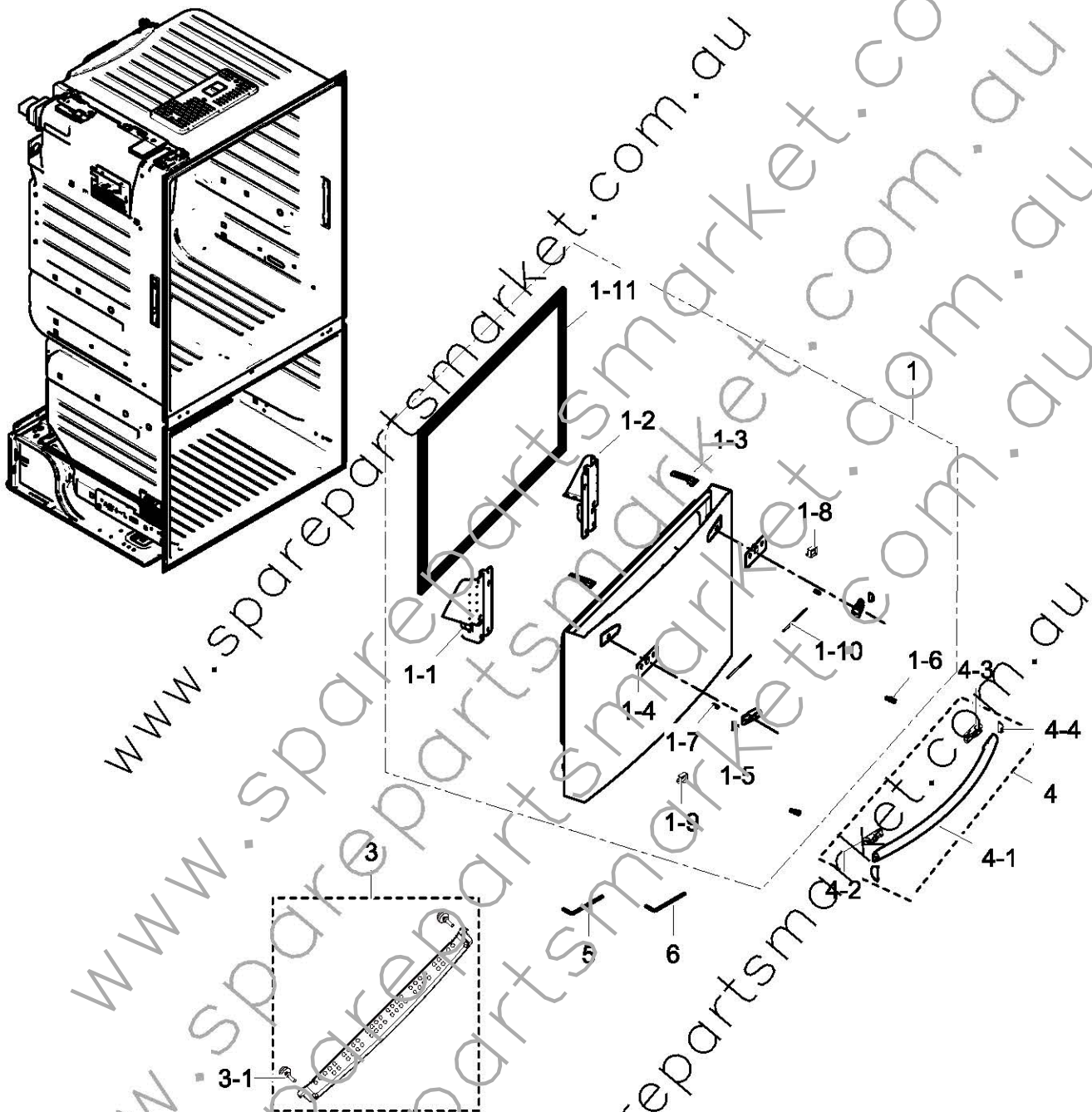
No.	Lvl.	Loc.	Material Code	Description & Specification	SNA	Qty.
9	2	RH003	DA97-13784A	ASSY TRAY DRAIN WATER; AW4-4D,C160	SA	1
9-1	3	RO361	DA63-06897A	TRAY-DRAIN WATER; AW4,PP,NATURAL,PP S	SA	1
9-2	3	RO132	DA97-12842A	ASSY SUPPORT-CIRCUIT MOTOR; HM12,160mm FA	SA	1
9-2-1	4	RF412	DA61-08427A	SUPPORT-CIRCUIT MOTOR; HM12,ABS,CNTK A-20	SC	1
9-2-2	4	RH039	DA61-08428A	BRACKET CIRCUIT MOTOR; HM12,ABS,GRAY,ABS	SC	1
9-2-3	4		DA31-00305C	MOTQR BLDC-CIRCUIT; DRC P8020LA,1120+-6%,1	SC	1
9-2-4	4	RR053	DA61-20128A	SPRING ETC-FAN; STS304,PI8-8,ID7.8,OD9.8,	SA	1
9-2-5	4	RG062	DA31-00320A	FAN; HM12,ABS+GLASSFIBER,GR-4010/NTR	SC	1
9-2-6	4	RI086	DA63-07065A	GROMMET-MOTOR; HM12,NBR,BLACK	SA	1
9-3	3	RH022	DA63-40128A	GROMMET-SUB COND; -,NBR,-,-,-,-,-,DARK-	SA	2
9-4	3		DA97-08464F	ASSY PIPE-CONDENSER; AW3-1	SA	1
10	2	RH732	DA66-02617A	GROMMET COMP; USP05,EPDM,OD27.0,BLACK	SA	4
11	2	RH002	XJKV190GL2B/E01	COMPRESSOR,BLDC,9.08CC,220-240V,FAN COOL; COMPRESSOR,BLDC,9.08CC,220-240V,FAN COOL	SA	1
12	2	RH070	DA97-10848N	ASSY COMP-SUB; WIRE HARNESS-COMP SUB,4TM4	SA	1
12-1	3	RO354	DA34-00004D	RELAY PROTECTOR OIL; 4TM445PHBYY-82,BK190	SA	1
12-2	3	RH741	DA39-00154M	WIRE HARNESS-COMP; 35151-061*,2005820-1,F	SA	1
13	2	RH015	DA63-01866A	COVER RELAY, NORYL,T2.0,SSEC,BLACK,HOOK	SA	1
14	2	RO079	DA97-08458C	ASSY PIPE CONNECT; AW3,4 DOOR	SA	1
14-1	3	RX042	DA63-40171D	GROMMET-SUCT PIPE,B,RAIL L20,NR,ID5.5,OD	SA	1
15	2	RZ110	DA97-04049E	ASSY CAP-DRAIN; AW3	SA	1
15-1	3	RH890	DA62-01266B	TUBE PVC; AW3,SF-PVC,BLACK	SA	1
15-2	3	RG141	DA61-05021A	FIXER-DRAIN; HAEMIL,PP,CARMEN WINE,HB,BJ7	SA	1
15-3	3	RZ111	DA67-01201A	CAP-DRAIN; TD09,HIPS,-,HB,S834S1,COOL WH	SA	1
15-4	3	RO161	DA63-02761A	GROMMET-DRAIN; RS18RK,NBR,-,-,-,-,-,BLK,-	SA	1
16	2	RZ110	DA97-04049J	ASSY CAP-DRAIN; ASSY,L199.5	SA	2
16-1	3	RH890	DA62-01266E	TUBE PVC; AW3,SF-PVC,T0.7,L185,GRAY	SA	2
17	2	RH001	DA97-12749A	ASSY COVER COMP; AW4,GI-SGCC,T0.25	SA	1
18	2	RD067	DA97-08442A	ASSY COVER PCB PANEL; AW3	SA	1
19	1	RY475	DA92-00593C	ASSY PCB MAIN; ICE & WATER,DUAL,FDSR,AW2-14	SA	1

No.	Lvl.	Loc.	Material Code	Description & Specification	SNA	Qty.
20	2		DA60-00280A	FITTING-LOKRING 33; GRAND/SAM/HERMES,11SM	SA	1
21	2		DA60-00281A	FITTING-LOKRING 43; GRAND/SAM/HERMES,11SM	SA	2
22	2	RH044	DA62-04309B	DRYER; C1220T,9g,Cap	SA	1
24	2	RH026	DA73-10190U	PIPE-CONNECT DISC,B; TD-PJT,C1220-TOD6.3	SA	1
25	2	RH069	DA27-00041B	COIL FILTER; SSLF-203AF1,14.0mH,60*82mm,B	SA	1
26	2		DA97-05029C	ASSY COVER PIPE WATER; AW-PJT	SA	1
27	2	RF290	DA97-00209Z	ASSY-PIPE WATER FRE; AW2-11,HOSE L0.36m,	SA	1
27-1	3	RO552	DA47-00192E	HEATER-WATER PIPE; AW2-CD,P-CORD,2W,12V,7	SA	1
27-2	3	RK423	DA62-01368A	PIPE-WATER LINE; LLDPE,WHITE,I.D4.2, O.D6	SNA	5
27-3	3	RF335	DA73-00134D	PIPE-WATER FRE ASSY, AW2 CD,AL,15.8,L285,	SA	1
27-4	3	RM020	DA71-20308A	FIXER-VALVE WATER B; SR-S7180,NY-6,OD6.1,	SA	1
28	2	RR963	6011-001656	BOLT-HEX; HWH,M6,L16,ZPC(WHT),SWCH22,MACH	SA	4
29	2	RM074	DA97-08413B	ASSY COVER-TUBE FILTER; AW4,ASSY	SA	1
30	5	RK705	DA32-00033C	SENSOR TEMP; PX-4TC,-40~1105V,JST HOU	SA	1
31	5	RF1Q3	DA63-05470B	COVER SENSOR-FRE; AW3,HIPS,NTR	SA	1
32	4		DA63-06382B	COVER-FIXER HOUSING REF; OPUS,HIPS,NTR	SNA	1
33	2		3903-000789	CBF-POWER CORD; AT,AUSTRALIA,AP-3,250V/10	SA	1
34	2		3601-001731	FUSE; 250V,5.0A,TIME LAG,GLASS 5*20	SNA	1
35	2	RC934	DA39-20389L	WIRE HARNESS-EARTH; 1,YELLOW/GREEN,ST 710	SC	1
36	3	RR162	DA60-00143B	FASTENER-RING INSERT; AW,SK-5H,23,T1.0,	SA	2
37	2	RI069	DA97-05926T	ASSY-INSTALL FILTER; HM,NW2	SA	1
37-1	3	RC001	DA62-01329A	PIPE-CONNECT WATER PACKING; ET-PJT,BRASS,	SA	1
37-2	3	RH710	DA65-20110B	CLAMP; -,NY-66,-,DN-5N,PI8.0	SA	8
37-3	3		DA80-00002F	WRENCH-SPANNER; AW3,SM45C,Zn PLATING	SA	1
37-4	3	RR072	DA74-00070P	VALVE-FITTING NUT; A-TOP,CU,12,C3604 BD-F	SA	2
37-5	3	PO207	DA62-01378B	VALVE-FITTING PU; AT06,C3604BD-F,-,-,-	SA	1
37-6	3	RR094	DA61-04522A	CLIP-FITTING LOCK; AW,POM,-,-,1/4inch	SA	2
37-7	3	RU304	DA63-04744A	COVER-CHECK VALVE; HM,PP,HB,GRAY,CNTK-P-1	SA	1
38	2	RO255	DA61-04932A	FIXER HINGE-UPP; HEAMIL-PJT,GI,T3.0,-,-	SA	2
39	2	RC518	DA62-03914A	TUBE-FITTING; PP,1/4"-1/4",TRANSPARENT	SA	1
40	2	RY480	DA61-03467B	FIXER-HOSE; AW-PJT,HIPS,NTR	SA	2

No.	Lvl.	Loc.	Material Code	Description & Specification	SNA	Qty.
41	2		DA97-14976A	ASSY HINGE-UP RIGHT; FDSR,PO-SPHC,T3.0,EL	SA	1
41-1	3		DA61-09970A	HINGE-UP RIGHT; FDSR,PO-SPHC,T3.0,115 * 1	SNA	1
41-2	3	RK777	DA63-50192A	SHIM-HINGE UP; RD-PVC,-,T1.0	SA	1
41-3	3	RO573	DA66-00951A	CAM-AUTO CLOSE R; AW4,POM,BLACK	SA	1
42	2		DA99-03490P	ASSY INSTALL-ACCESSORY VALVE	SA	1
42-1	3		DA80-00002F	WRENCH-SPANNER; AW3,SM45C,Zn PLATING	SA	1
42-2	3		DA80-00026B	WRENCH-SPANNER; AW3,SM45C,Zn Plating	SA	1
42-3	3	RR162	DA60-00143B	FASTENER-RING INSERT; AW,SK-5H,23,T1.0,	SA	2
42-4	3		DA67-03197A	CAP-WRENCH; AW3-PJT,PVC BLACK	SA	1
42-5	3	RR178	DA61-03734A	FIXER-HANDLE; AW-PJT,SWRCH18A,M8,-,GE	SA	4
43	2	RH778	DA63-07680A	COVER UNIT; AW3-14,ABS,HB,INOX GRAY,HG-07	SA	2
44	3		DA97-13583A	ASSY DRAIN-HOSE REF; AW4,-	SNA	1
45	3		DA97-13881A	ASSY DRAIN-HOSE ICE SUB; AW4	SNA	1
46	3		DA97-14450A	ASSY DRAIN HOSE-FRE; AW2-J4	SNA	1
47	2		DA97-08494B	ASSY COVER-FIXER WATER; OPUS1,ASSY	SNA	1
48	2		DA97-13783A	ASSY COVER SWITCH; AW4-4D (F/S, C/D),FDR	SA	1
48-1	3		DA63-07513A	COVER REED SWITCH; AW4-4D (F/S, C/D),ABS,	SA	1
48-2	3	RY001	DA34-00043J	SWITCH REED; 200VDC,0.5A,3050	SA	1
49	1		DA92-00483F	ASSY PCB INVERTER; INVERTER PEA OPUS1-14,	SA	1
50	1		DA92-00486A	ASSY MODULE; STD #8 SMPS,FOOD SHOWCASE,45	SA	1

4. Freeze Door

Exploded View



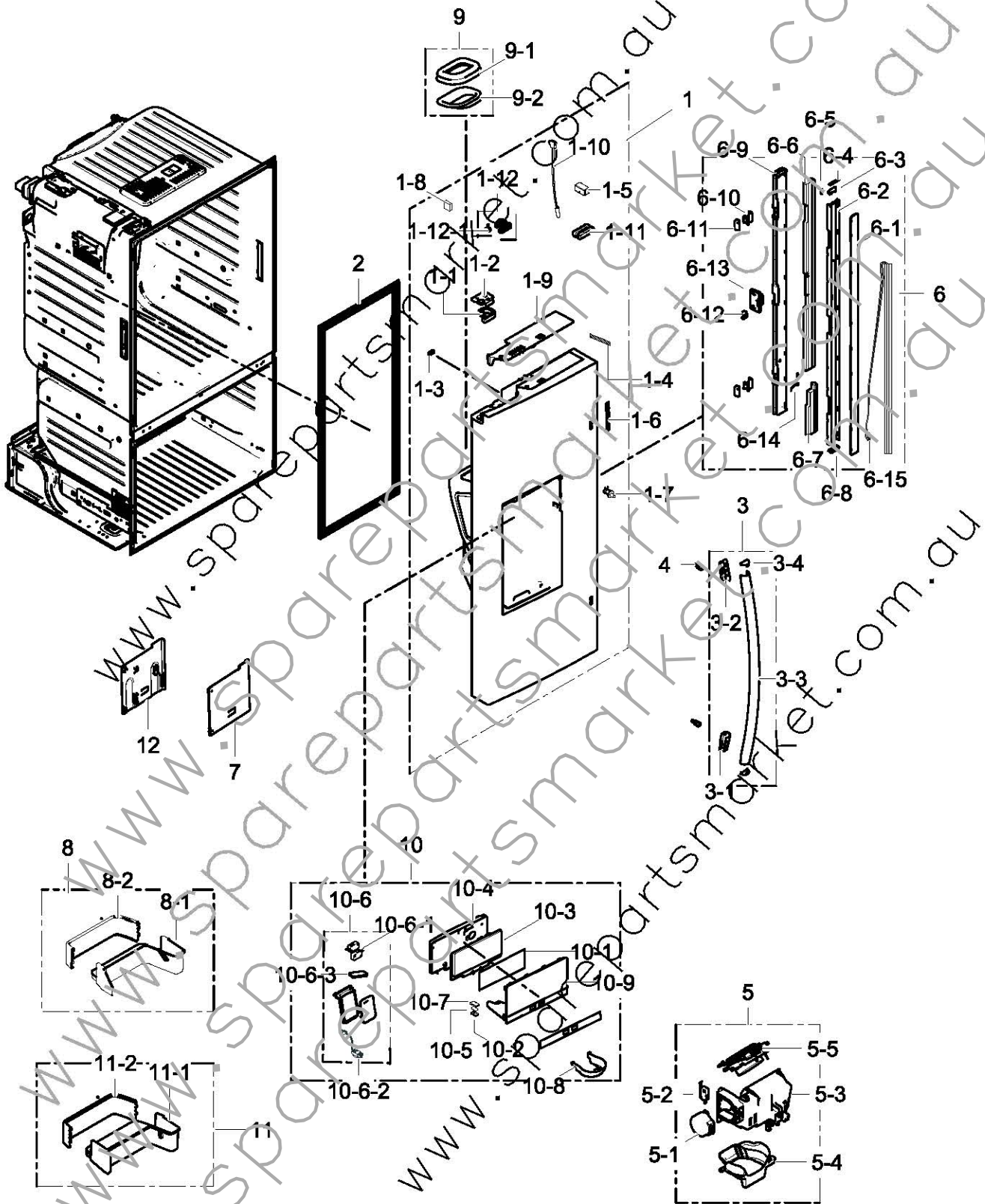
Parts List

No.	Lvl.	Loc.	Material Code	Description & Specification	SNA	Qty.
1	2	RD001	DA97-14300J	ASSY DOOR-FRE; AW2-14 FDSR	SA	1
1-1	3	RD092	DA61-03153B	HANGER-RAIL FRONT L; AW-PJT,SECC1,T2.0,CO	SA	1
1-2	3	RD093	DA61-03155B	HANGER-RAIL FRONT R; AW-PJT,SECC1,T2.0,CO	SA	1

No.	Lvl.	Loc.	Material Code	Description & Specification	SNA	Qty.
1-3	3	RU513	DA97-12522J	ASSY-GASKET DOOR FRE; AW4,GRAY(SC-97478)	SA	1
1-4	3	RF219	DA61-06658A	REINF-CAP HANDLE; AW3,SGHC,T1.6	SA	2
1-5	3	RU036	DA61-08234A	SLIDER-EASY HANDLE; AW4,POM,CREAMY-ST5,F2	SA	2
1-6	3	RR178	DA61-03734A	FIXER-HANDLE; AW-PJT,SWRCH18A,M8,-,GE	SA	4
1-7	3	RD157	DA61-04335A	SPRING ETC-EASY HANDLE; 08 AW1,2-PJT,HSWR	SC	2
1-8	3	RU029	DA61-05899A	FIXER-SHAFT R; AW3,POM,NTR	SA	2
1-9	3	RU028	DA61-05930A	FIXER-SHAFT L; AW3,POM,BLACK(SC-00477R)	SA	2
1-10	3	RK756	DA66-00579A	SHAFT-CAP HANDLE; AW-PJT SM45C,105,5,ZPC3	SA	2
1-11	3	RU513	DA97-12522J	ASSY-GASKET DOOR FRE; AW4 GRAY(SC-97478)	SA	1
3	2	RD016	DA97-10963A	ASSY GUARD FRE, AW2 CD,HIPS,T2.3,COOL WHI	SA	1
3-1	3	RI220	DA63-02750A	GROMMET COVER SLIDE; ET05-PJT,SILICON,WHI	SA	2
4	3	RO600	DA97-12712C	ASSY HANDLE BAR-FRE; AW4,AL(A6063),Versai	SC	1
4-1	4	RO392	DA64-03945F	HANDLE BAR-FRE; AW1-12,AW4,AL,T1.3,Versai	SA	1
4-2	4	RU390	DA61-08229A	SUPPORT-HANDLE FRE; AW1-12,AW4,POM,GF-702	SA	1
4-3	4	RD315	DA61-08247A	SUPPORT-HANDLE FRE R; AW1-12,AW4,POM,GF-7	SA	1
4-4	4	RD316	DA67-02787A	CAP-HANDLE FRE; AW2 ND,ABS,NTR,NI-CR Plat	SA	2
5	3		DA80-00002F	WRENCH-SPANNER; AW3,SM45C,Zn PLATING	SA	1
6	3		DA80-00026B	WRENCH-SPANNER; AW3,SM45C,Zn Plating	SA	1

5. Fridge Door Left

Exploded View



Parts List

No.	Lvl.	Loc.	Material Code	Description & Specification	SNA	Qty.
1	2		DA91-04147G	ASSY DOOR FOAM-REF LEFT; AW2-14,REAL STS,	SA	1
1-1	4	RU262	DA61-02383E	SUPPORT-DOOR CLOSE; AW-PJT,POM,-,-,-,CREA	SA	1
1-2	4	RD070	DA61-08210A	STOPPER-DOOR L; AW4,PO-SPHC,T2.9,BLACK	SA	1
1-3	4	RY479	DA61-03769A	MAGNET-A; HERMES,-,5x7x18,-,-,1200Gauss	SA	1
1-4	4		DA41-00676G	ASSY LAMP LED; FR-4,30*20,WHITE,SMAW250	SA	1
1-5	4	RO305	DA61-05274A	PLATE-DOOR SWITCH; AW2 CD,SGCC,T0.4,-,-	SA	1
1-6	4	RU017	DA63-05524A	COVER-CAP DOOR LED; AW3,PC,NTR	SA	1
1-7	4	RO304	DA34-00066C	SWITCH DOOR-INTERLOCK; 1 BUTTON,125V/250V	SA	1
1-8	4	RR067	DA63-40294A	GROMMET-STOPPER; T3XW8XL8,NR,-,-,-,-,-	SA	1
1-9	4		DA65-06916A	COVER-CAP DOOR REF UPP L; AW4,ABS,CREAMY	SA	1
1-10	4	RO302	DA32-00034B	SENSOR HUMIDITY; SHT20P,POLARIS,5V,1mA,0	SA	1
1-11	4	RD297	DA63-04325A	GROMMET-CHASSIS UP; SRT749,SILICON,T5.0,W	SA	1
1-12	4	RO172	DA97-12625A	ASSY LEVER-AUTO CLOSE; AW4,POM,BLACK	SA	1
1-12-1		RO570	DA66-00440A	ROLLER-AUTO CLOSE; AW-PJT,NY-6,BLACK	SA	1
2	2		DA97-13015E	ASSY GASKET-REF; AW2-CD-14,AW2-CD-14, GRA	SA	1
3	3		DA97-12715C	ASSY HANDLE BAR-REF L; AW4,AL(A6063),Vers	SC	1
3-1	4		DA61-08228A	SUPPORT-HANDLE REF; AW1-12,AW4,POM,GF-70	SA	1
3-2	4	RE305	DA61-08246A	SUPPORT-HANDLE REF UPP; AW1-12,AW4,POM,GF	SA	1
3-3	4		DA64-03756K	HANDLE BAR-REF L; AW1-12 & AW4,AL,T1.3,Ge	SC	1
3-4	4		DA67-02785A	CAP-SUPT HANDLE REF; AW3,ABS,NTR,CR Plati	SA	2
4	3	RR178	DA61-05734A	FIXER-HANDLE; AW-PJT,SWRCH18A,M8,-,GE	SA	4
5	2		DA97-13829B	ASSY GUIDE ICE ROUTE; AW4_4D,220V	SA	1
5-1	3	RF261	DA31-00079C	MOTOR GEARED-DISP; 15.2/18.2 rpm,50/60Hz,	SA	1
5-2	3	RK822	DA34-00011A	SWITCH-MICRO; VP533A-OF-5,MICRO,PBT,250V,	SA	2
5-3	3		DA61-09432A	CASE ICE ROUTE; AW4-4D,ABS,I BLACK,HG-076	SNA	1
5-4	3	RD273	DA61-09433A	GUIDE ICE; AW4-4D,HIPS,S834S1,NATURAL,GUI	SNA	1

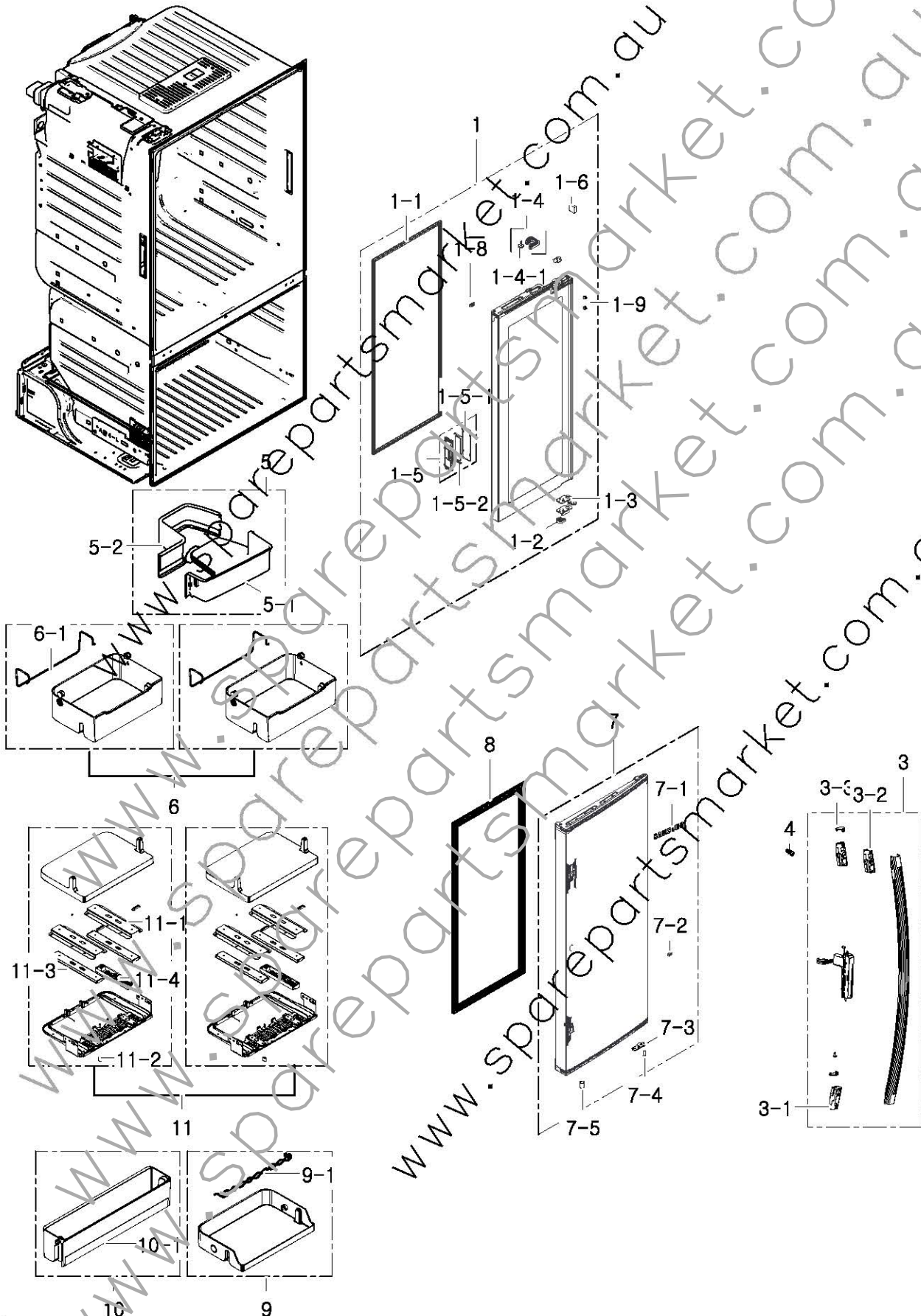
Exploded Views and Parts List

No.	Lvl.	Loc.	Material Code	Description & Specification	SNA	Qty.
5-5	3	RD068	DA97-05368A	ASSY COVER-ICE ROUTE; AW-PJT,5,5,5,5,5,5	SA	1
6	2		DA97-12624D	ASSY FRENCH; AW4,THAI-SILVER,230V	SA	1
6-1	3	RE163	DA61-08271A	PLATE-FRENCH; AW4,BGI-SECC,T0.6,THAI SILV	SNA	1
6-2	3		DA61-08273A	CASE-FRENCH FRONT; AW4,ABS,COOL WHITE(SC-	SNA	1
6-3	3		DA67-03358A	CAP-GUIDE FRENCH UPP; AW4,PA66,KN3311,NTR	SNA	1
6-4	3		DA63-06959A	GASKET-FRENCH UPP; AW4,SILICON,GRAY	SA	1
6-5	3		DA61-08315A	SPRING ETC-ETC CAP GUIDE; AW4,STS304,0.5,	SNA	1
6-6	3	RI234	DA62-03660A	INSULATION-FRENCH; AW4,FOAM-PS,SF-401H	SNA	1
6-7	3		DA62-03666A	INSULATION-FRENCH LOW; AW4,FOAM-PS,SF-401	SNA	1
6-8	3	RO169	DA63-06842B	GASKET-FRENCH LOW; AW-PJT,SILICON,GRAY	SA	1
6-9	3	RE164	DA61-08272A	CASE-FRENCH; AW4,ABS,COOL WHITE(SC-02740R	SNA	1
6-10	3	RD098	DA61-08305A	HINGE-FRENCH; AW4,PC,COOL-WHITE(SC-02740R	SA	2
6-11	3	RE401	DA67-01650A	CAP-CASE FRENCH; AW-PJT,ABS,HG-0760GP,CO	SA	2
6-12	3	RE091	DA67-01701A	CAP-CASE FRENCH MID; AW-PJT,ABS,HG-0760GP	SA	1
6-13	3	RI239	DA63-03454B	COVER-HEATER FRENCH; AW-PJT,PC(HF-1023IM)	SA	1
6-14	3		DA61-08314A	SPRING ETC-FRENCH; AW4,STS304,114.5,2,8.0	SNA	1
6-15	3	RF118	DA47-00245V	HEATER CORD FRENCH; AC230V, 2W,PVC,1816mm	SA	1
7	2		DA67-03917B	CAP REINF; FDSR-4D,ABS,-,HB,HG-0760GP,COO	SA	2
8	2		DA97-14301C	ASSY GUARD-REF MIDDLE; AW2-14,CARIBEAN(B)	SA	1
8-1	3		DA63-07677A	GUARD-REF MIDDLE; AW2-CD14,HIPS,COOL WHIT	SNA	1
8-2	3		DA63-07682B	COVER GUARD-MIDDLE LOW; AW2CD-14,GPPS,HB,	SNA	1
9	2		DA97-12594A	ASSY CAP-CHUTE ICE; AW4,T2.5,COOL WHITE	SA	1
9-1	3	RE161	DA63-06945A	GASKET-CAP CHUTE ICE; AW4,SILICON,WHITE,4	SA	1
9-2	3	RD266	DA67-03312A	CAP-CHUTE ICE; AW4,HIPS,HB,S834S1,COOL WH	SA	1
10	2		DA97-13809P	ASSY COVER DISPENSER; AW2-14(DUAL),AUSTRALIA	SA	1

No.	Lvl.	Loc.	Material Code	Description & Specification	SNA	Qty.
10-1	3		DA64-04669A	INLAY-FILM; AW2 CD-14,PET+UV COATING,BLA	SA	1
10-2	3	RU012	DA61-05687A	CASE LAMP-LED; SEDA,GPPS,T1.0,NTR,HIT	SA	2
10-3	3		DA92-00597A	ASSY MODULE, LED TOUCH DISPLAY,AW2-14,AW2	SA	1
10-4	3	RO464	DA63-06377A	COVER PCB-PANEL REAR; OPUS1,HIPS,GRAY,CNT	SA	1
10-5	3	RK964	DA41-00217A	ASSY PCB KIT; AD,DOOR FR,FR-1,31*17,DISP	SA	2
10-6	3		DA97-12628H	ASSY LEVER DISPENSER; AW3-14,STS304	SA	1
10-6-1	4	RD460	DA34-00011B	SWITCH MICRO: 250V,16A,Max 200g	SA	1
10-6-2	4		DA96-00106G	ASSY-W/HARNESS DISP; ALL,12VDC,ALL,UL,All	SA	1
10-6-3	4	RE059	DA63-05449A	COVER-SWITCH; AW3,ABS,NATURAL,HG-0760GP	SA	1
10-7	3	RE310	DA66-02446A	COVER-LAMP-LED; EPEL,ABS,-,W39.6,L22.6,-,SA	SA	2
10-8	3		DA63-07637A	COVER ICE; AW4-4D,ABS,HB,CREAMY STS PEARL	SA	1
10-9	3		DA97-13808F	ASSY COVER DISPENSER-SUB; AW3-14,AW2-14,	SA	1
11	2	RU161	DA97-14302C	ASSY GUARD-REF LOW; AW2-14,CARIBEAN BLUE	SA	1
11-1	3	RE368	DA63-07678A	GUARD-REF LOW; AW2,CD14,HIPS,COOL WHITE	SNA	1
11-2			DA63-07682B	COVER GUARD-MIDDLE LOW; AW2CD-14,GPPS,HB,	SNA	1
12	2		DA67-03916B	CAP REINF; FDSR-4D,ABS,-,HB,HG-0760GP,COO	SA	2

6. Fridge Door Right

Exploded View



Parts List

No.	Lvl.	Loc.	Material Code	Description & Specification	SNA	Qty.
1	3		DA91-04171B	ASSY DOOR FOAM-REF RIGHT; FDSR AW2-14	SA	1
1-1	2		DA97-13015E	ASSY GASKET-REF; AW2-CD-14,AW2 CD-14, GRA	SA	1
1-2	4		DA61-09950A	SUPPORT DOOR-MIDDLE; FDSR,POM,HB,SO301,CR	SA	1
1-3	4	RO598	DA61-09969A	HINGE-LOW; FDSR,PO-SPHC,T4.0,66.5*64*	SA	1
1-4	4		DA97-14992A	ASSY LEVER AUTO CLOSE; FDSR,POM, BLACK	SA	1
1-4-1	5	RO570	DA66-00440A	ROLLER-AUTO CLOSE; AW-PIT,NY-6,BLACK	SA	1
1-5	4		DA97-14543B	ASSY CASE LAMP-REF LEFT; FDSR	SNA	2
1-5-1	5		DA63-07813A	COVER LAMP-SIDE LEFT; RFH920G,ABS,HB,NATL	SA	2
1-5-2	5		DA96-01060B	ASSY LAMP LED; 6,FR-4,45.5*7 WHITE,SMH250	SA	2
1-6	4	RR067	DA63-40294A	GROMMET-STOPPER; T3XW8XL8,NR,-,-,-,-,-,	SA	1
1-8	4	RY479	DA61-03769A	MAGNET-A; HERMES,-,5x7x18,-,-,1200Gauss	SA	1
1-9	4		DA63-07538A	GROMMET-A; MOUTON12,SILICON,COOL WHITE,NA	SA	2
3	3	RC012	DA97-15014A	ASSY HANDLE-REF; FDSR,ASSY	SA	1
3-1	4		DA61-08228A	SUPPORT-HANDLE REF; AW1-12,AW4,POM,GF-702	SA	1
3-2		RE305	DA61-08246A	SUPPORT-HANDLE REF UPP; AW1-12,AW4,POM,GF	SA	1
3-3	4		DA67-02788A	CAP-SUPT HANDLE REF; AW3,ABS,TR,CR Plati	SA	2
4	3	RR178	DA61-03734A	FIXER-HANDLE; AW-PJT,SWRCH18A,M8,-,GE	SA	4
5	2		DA97-13804C	ASSY GUARD-REF UP; AW2-14,CARIBEAN BLUE	SA	1
5-1	3	RE127	DA63-07509A	GUARD-DISPENSER; AW4-4D(C/D),HIPS,COOL WH	SNA	1
5-2	3		DA63-07528B	COVER GUARD-REF UP; AW2CD-14,PPS,HB,CARI	SNA	1
6	2		DA97-14996A	ASSY GUARD-REF LOW RIGHT; FDSR,SLIDE GUAR	SA	2
6-1	3		DA61-09948A	SUPPORT WIRE-LOW; FDSR,STAINLESS-ST5204,-	SA	2
7	2		DA91-04198B	ASSY DOOR FOAM-REF RIGHT; FDSR-3D, RS PLA	SA	1
7-1	3	RO716	DA64-04021C	MASCOT; ALL,NI,-,T0.06,L90	SA	1
7-2	4	RY479	DA61-03769A	MAGNET-A; HERMES,-,5x7x18,-,-,1200Gauss	SA	1
7-3	4		DA61-09951A	STOPPER DOOR-REF LOW; FDSR,PO-SPHC,T3.0,B	SA	1

No.	Lvl.	Loc.	Material Code	Description & Specification	SNA	Qty.
7-4	4		DA63-07545B	GROMMET HINGE-MIDDLE; FDSR,PA66,BLACK,8.2	SA	2
7-5	4	RU302	DA73-00211A	RUBBER-CAP HOSE; i4-PJT,SILICON,GRAY	SA	1
8	2		DA97-13915D	ASSY GASKET-REF; FDSR,3 DOOR(OUT DOOR)	SA	1
9	2	RE028	DA97-14644A	ASSY GUARD BARRY; FDSR,ASSY GUARD	SA	1
9-1	3		DA61-09976A	SUPPORT WIRE-UP; FDSR,STAINLESS-ST5204,-,	SA	1
10	2	RE017	DA97-14645A	ASSY GUARD BOTTLE; FDSR,ASSY GUARD	SA	1
10-1	3	RU461	DA63-07918A	GUARD-REF SUB; FDSR,GPPS,CARIBBEAN BLUE	SNA	1
11	2		DA97-14997A	ASSY TRAY-LOW; FDSR,SLIDE GUARD TRAY	SA	2
11-1	3		DA61-09232A	RAIL-MIDDLE RIGHT; FOOD SHOW CASE,CR-SPCC	SA	4
11-2	3		DA63-07559A	GROMMET-LOW; FOOD SHOWCASE,SILICON,WHITE	SA	2
11-3	3		DA97-13887A	ASSY RAIL-MIDDLE; FOOD SHOW CASE,ASSY	SA	4
11-4	3		DA97-13895A	ASSY RAIL-UP; FOOD SHOW CASE,ASSY	SA	2