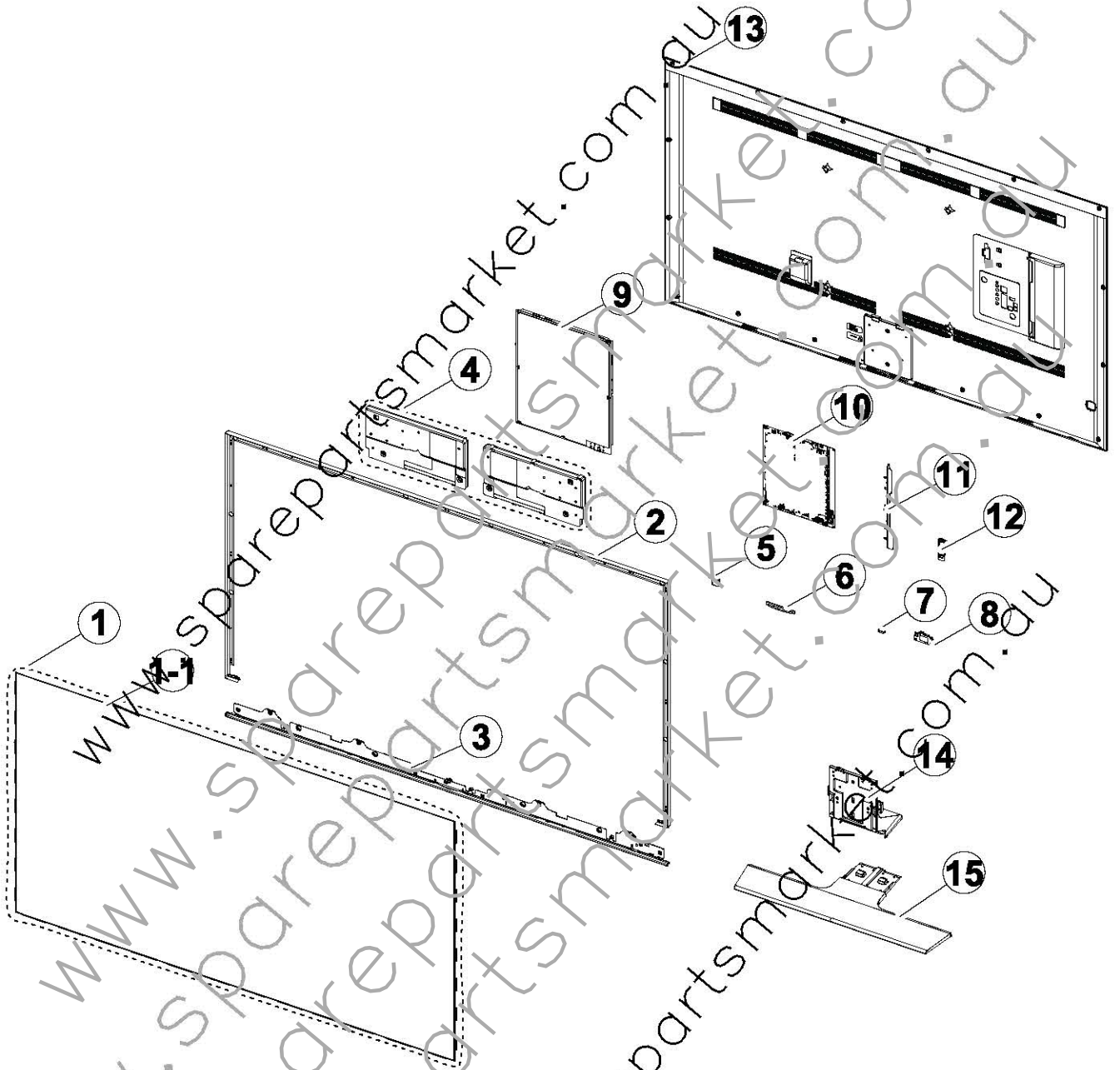


1. Exploded View & Part List

Exploded View



Parts List

No.	Lvl.	Loc.	Material Code	Description & Specification	SNA	Qty.
1	2	PANEL	BN95-01369A	PRODUCT LCD-AMLCD; CY-KH055FSLV1V,10 bit,	SA	1
1-1	3	TC01A	BN96-30305A	ASSY CHASSIS TOP P; Y14 U8.5K 55,SDC,BN64	SNA	1
2	2		BN96-32234A	ASSY COVER P-DECORATION TOP; UH8500,55,AL	SA	1
3	2	CD01A	BN95-01510A	ASSY DECORATION SMT; UH8500,55,SILVER,PC+	SA	1
4	2	SP01A	BN96-30935A	ASSY SPEAKER P; 6ohm, 10W,Enclosure U7000	SA	1
5	2	BT	BN96-30218A	ASSY BOARD P-RF-MODULE; Bluetooth Module,	SA	1
6	2		BN96-32216A	ASSY BLU P-LOGO; HU8500,M14-HU8500-AA,21m	SA	1
7	2	IR PBA	BN96-32206A	ASSY BOARD P-IR FUNCTION; HU8500 SJ14-01-	SA	1
8	2	WIFI	BN59-01174A	NETWORK-WIFI MODULE; WIDT-30Q,internal Wi	SA	1
9	2	P001A	BN44-00742A	DC VSS-UHD PD BD; L55G4P_EHS,L55G4P_EHS,A	SA	1
10	2	M0014	BN94-07588R	ASSY PCB MAIN; UH8F	SA	1
11	3		BN61-10507A	HOLDER-SIDE AV; HU8500,HIPS,1TUNER	SNA	1
12	2	JOG	BN96-29508A	ASSY BOARD P-JOG FUNCTION; S9,SUNGJI,FR-4	SA	1
13	2	R001A	BN96-31723D	ASSY COVER P-REAR; UH8500,55,PC+ABS+GF15%	SA	1
14	2	SG01A	BN96-31810A	ASSY GUIDE P-STAND; UH8000,48/50/55/65,AB	SA	1
15	2	SB04A	BN96-31730A	ASSY STAND P-BASE; UH8500,48/50/55,AL	SA	1

2. Electrical Parts List

Level	Loc.	Part Code	Description & Specification	Qty.	SA/SNA
			UA55HU8500WXXY (TH01)		
1	R001A	BN90-05575D	ASSY COVER REAR;UH8500,55	1	SNA
.2	SCREW	6001-002755	SCREW-MACHINE;BH,+ ,M3,L6,ZPC(BLK),SWRCH1	16	SA
.2	SCREW	6003-001782	SCREW-TAPTTYPE;BH,+ ,B,M4,L12,ZPC(BLK),SWR	2	SA
.2	R001A	BN96-31723D	ASSY COVER P-REAR;UH8500,55,PC+ABS+GF15%	1	SA
..3		BN60-00162C	SPACER-FOAM;FOAM,50000mm,DARK GRAY,0.5T,	0	SNA
..3	R001	BN63-11964A	COVER-REAR;HU8500,PC+ABS+G/F 5%,BLK,55in	1	SNA
..3	T0071	BN64-02690C	INLAY-TERMINAL;HU8500,PS SHEET,T0.3,128.	1	SNA
..3		BN68-05825G	LABEL-TERMINAL SIDE;HU8500,PET,T0.125,W1	1	SNA
1	S001A	BN90-05578A	ASSY STAND;UH8500,48/50/55	1	SNA
.2	SB04A	BN96-31730A	ASSY STAND P-BASE;UH8500,48/50/55,AL	1	SA
..3		6001-003041	SCREW-MACHINE;FH,+ ,M4,L8,ZPC(BLK),SWRCH1	4	SA
..3		6902-002087	BAG PE;HDPE/PE FOAM,T0.015/T0.5,W700,L16	1	SNA
..3		6902-002092	BAG PE;HDPE/PE FOAM,T0.015/T0.5,W180,L16	1	SNA
..3		BN61-10461A	BRACKET-BOTTOM-LINK;HU8500,ALCOAT-SA1C,T	1	SNA
..3		BN63-11969A	COVER-STAND-BASE;HU8500,ALCOAT-SA1C,Extr	1	SNA
..3		BN63-12056A	COVER-STAND-TOP;HU8500,PC+ABS+G/F15%,BLK	1	SNA
..3		BN64-02669A	PLATE-INLET;HU8500,Ni,0.05,black chrome,	1	SNA
..3	M001A	BN73-00052C	RUBBER-FOOT;LCD TV,Silicone RUBBER,T2.0	9	SNA
.2	SG01A	BN96-31810A	ASSY GUIDE P-STAND;UH8000,48/50/55/65,AB	1	SA
..3	SCREW	6003-000264	SCREW-TAPTTYPE;PWH,+ ,B,M3,L6,ZPC(WHT),S	1	SA
..3	SCREW	6003-001208	SCREW-TAPTTYPE;BH,+ ,S,M4,L12,ZPC(BLK),SWR	1	SA
..3	SCREW	6003-001785	SCREW-TAPTTYPE;FH,+ ,B,M4,L8,ZPC(BLK),SWRC	2	SA
..3		6902-002059	BAG PE;HDPE/PE FOAM,T0.015/T0.5,W300,L40	1	SNA
..3		BN61-10463A	BRACKET-NECK;HU8500,PO,T4.0,48-65in	1	SNA
..3	AH089	BN61-10505A	HOLDER-CABLE;HU8500,ABS,HB	1	SNA
..3	AS080	BN63-04755G	SHEET-COVER;42PC450,PE,T0.05,W250mm,200M	1	SNA
..3		BN63-12050A	COVER-NECK-FRONT;HU8500,ABS,HB,BLK,50-55	1	SNA
..3		BN63-12053A	COVER-NECK-REAR;HU8500,ABS,BLK,50-55in	1	SNA
..3		BN68-05603A	LABEL-E_PASS;ALL MODEL,ART PAPER 90G,60,	1	SNA
..3		BN96-29120M	ASSY ACCESSORY-SCREW;BN61-09494B-M4L14,8	1	SNA
..4		BN61-09494B	HOLDER-EMI BOLT;BH,SWRCH18A,L14,M4,STY	8	SA
.4		BN69-09241R	PACKING-BAG-SCREW;HU8500,LDPE,0.05,70,90	1	SNA
1		BN90-05729A	ASSY W/I;UH8U,U55HU1	1	SNA
.2		BN81-08159Z	PART SET-ELEC W/I;UF4-UF8,UH4-UH9 ELEC	1	SNA
.2		BN81-09498N	PART SET-MECH W/I;UH8U,U55HU*	1	SNA
1		BN91-12228A	ASSY LCM-AMLCD;BN95-01369A,CY-KH055FSLV1	1	SNA
.2	PANEL	BN95-01369A	PRODUCT LCD-AMLCD;CY-KH055FSLV1V,10 bit,	1	SA

Exploded Views and Parts List

Level	Loc.	Part Code	Description & Specification	Qty.	SA/SNA
...3		6001-002912	SCREW-MACHINE;CH,+,M3,L3,ZPC(BLK),SWRCH1	24	SA
...3	SCREW	6001-003075	SCREW-MACHINE;BH,+,M3,L4,ZPC(WHT),SWRCH1	8	SA
...3	SCREW	6001-003081	SCREW-MACHINE;PWH,+,M3,L5,ZPC(WHT),SWRCH	6	SA
...3		BN02-00102B	TAPE FILAMENT;UE7000,#8917,0.15,25,50,WH	0	SNA
...3		BN02-00114A	TAPE ETC-COF;NNB 55",PET,0.07T,20,12,GRE	16	SNA
...3	M0131	BN63-00520A	GASKET;APPOLO_PAL,Conductive Fabric,0.13	4	SNA
...3		BN68-05595A	LABEL-STICKER;Art Paper 100G,T0,2,80mm,X2	1	SNA
...3		BN73-00211A	SILICON/RUBBER-GAPPAD;UE40B7000WWXXC,SIL	1	SNA
...3		BN74-00053E	TAPE PAPER-PROTECTION;3M2307,PAPER,0.14T	0	SNA
...3		BN90-05296A	ASSY MISC-BLU;H8500 55",CY-KH055FSLV1V	1	SNA
...4	SCREW	6001-003079	SCREW-MACHINE;CH,+,M3,L6,ZPC(BLK),SWRCH1	6	SA
...4		BN02-00311A	TAPE PET-SHEET FIXING;Y14 SNB H7K,U8.5K	3	SNA
...4		BN61-10215A	LGP-LED;55inch UD 8.5K ,Lenticular,MS,12	1	SNA
...4		BN63-11952A	SHEET-DBEF;DLF250 ,PET,0.25,1211,40,691.6	1	SNA
...4		BN63-11953A	SHEET-COMPOSITE;GCS120,PET,0.32,1210.60,	1	SNA
...4		BN63-11954A	SHEET-REFLECTOR;RL90TS,PE1,0.3,1212.00,6	1	SNA
...4		BN96-30302B	ASSY CHASSIS BOTTOM P;Y14 SNBUHD8.5K,AL,	1	SNA
....5	SCREW	6001-002159	SCREW-MACHINE;CH,+,M3,L4,ZPC(BLK),SWRCH1	8	SA
....5	T0073	AA63-01110C	GASKET-EMI;42D5,Conductive Fabric,1.0,10	1	SNA
....5		BN02-00040B	TAPE DOUBLE FACE-DIFFUSER FIXING;NNB 32	1	SNA
....5		BN02-00041A	TAPE ETC-HEAT-SINK;NNB 32/40/46/55,MTU 1	12	SNA
....5		BN02-00102B	TAPE FILAMENT;UE7000,#8917,0.15,25,50,WH	0	SNA
....5		BN02-00293A	TAPE THERMAL-GRAPHITE L;Y14 U8.5K 55,E-G	1	SNA
....5		BN02-00293C	TAPE THERMAL-GRAPHITE LED L;Y14 U.8.5K 5	1	SNA
....5		BN02-00293D	TAPE THERMAL-GRAPHITE LED R;Y14 U.8.5K 5	1	SNA
....5		BN02-00293E	TAPE THERMAL-GRAPHITE BEADING _A;Y14 U.8.	2	SNA
....5		BN02-00293F	TAPE THERMAL-GRAPHITE BEADING _B;Y14 U.8.	2	SNA
....5		BN02-00293G	TAPE THERMAL-GRAPHITE BEADING _C;Y14 U.8.	2	SNA
....5		BN02-00294A	TAPE THERMAL-GRAPHITE R;Y14 U8.5K 55,E-G	1	SNA
....5	EC13	BN39-01853F	LEAD CONNECTOR;55inch UD8500 _left,lead c	1	SNA
....5	EC13	BN39-01854E	LEAD CONNECTOR;55inch UD8500 _right,lead	1	SNA
....5		BN60-00931D	SPACER-RUBBER-LGP;Y14 U8.5K,SI,13,GRAY,2	2	SNA
....5		BN60-01012A	SPACER-FRAME;Y14 SNB,U8.5K,SI,21,WHITE,1	6	SNA
....5		BN61-02932X	BRACKET-STOPPER NUT;LED TV,M3*D7*L12.8,L	2	SNA
....5		BN61-07318A	HOLDER-WIRE;SNB 40/46/55,SILICON RUBBER,	1	SNA
....5		BN61-08345A	BRACKET-WALL MOUNT;NNB,SNB 32/40/46/55,S	4	SNA
....5		BN61-10195A	HOLDER-LGP;Y14 SNB H7K,EG1,4,4,5.4,BLK,D	2	SNA
....5		BN62-00516A	INSULATION-S-PCB-L;Y14 U8.5K 55,PET,0.1,	1	SNA
....5		BN62-00517A	INSULATION-S-PCB-R;Y14 U8.5K 55,PET,0.1,	1	SNA
....5		BN62-00581A	INSULATION-PD-BOARD;Y14 U8.5K 48,50,55,P	1	SNA

Level	Loc.	Part Code	Description & Specification	Qty.	SA/SNA
....5	CC02	BN64-02547A	CHASSIS-BOTTOM;Y14 U8.5K 55,AL 3104,T1.0	1	SNA
....5		BN68-05723A	LABEL-ACCESSORY;ALL MODELS,YUPO,0.2,20,7	1	SNA
....5	M0131	MD63-00103A	GASKET;GRANDSLAM,Conductive Fabric,1,10,	2	SNA
...4		BN96-30313A	ASSY FRAME P-MOLD MIDDLE-U;Y14 U8.5K 55,	1	SNA
....5		BN61-10152A	FRAME-MOLD MIDDLE-U;Y14 U8.5K 55,PC+GF,W	1	SNA
...4		BN96-30314A	ASSY FRAME P-MOLD MIDDLE-D;Y14 U8.5K 55,	1	SNA
....5		BN02-00050A	TAPE DOUBLE FACE;SNB 55,SK2100HE,0.05,2	1	SNA
....5		BN60-00942B	SPACER-PANEL-UD-A;Y14 U8.5K 55,SSP*,152.	2	SNA
....5		BN60-00943A	SPACER-PANEL-UD-B;Y14 U8.5K 50,55,SSP*,	1	SNA
....5		BN60-00944A	SPACER-PANEL-UD-C;Y14 U8.5K 50,55,SSP*,	1	SNA
....5		BN60-00946B	SPACER-LGP-UD;Y14 U8.5K 55,SI*,601,WHITE	2	SNA
....5		BN61-10153A	FRAME-MOLD MIDDLE-D;Y14 U8.5K 55,PC+GF,W	1	SNA
...4		BN96-30315A	ASSY FRAME P-MOLD MIDDLE-LR;Y14 U8.5K 55	2	SNA
....5		BN60-00945B	SPACER-PANEL-LR;Y14 U8.5K 55,SSP*,685.5,	2	SNA
....5		BN60-00947B	SPACER-LGP-LR;Y14 U8.5K 55,PET*,676,BLK,	2	SNA
....5		BN61-10157A	FRAME-MOLD MIDDLE-LR;Y14 U8.5K 55,PC+GF,	2	SNA
...4		BN96-30662A	ASSY LED BAR P;UD 55inch edge,7032pkg,88	1	SNA
...4		BN96-30663A	ASSY LED BAR P;UD 55inch edge,7032pkg,88	1	SNA
..3		BN96-29200B	ASSY OPEN CELL;LSF550FJ02-A,8bit,55INCH,	1	SA
...4		BN81-07436A	A/S-ADHESIVE-A.C.F;ADHESIVE-A.C.F,3-ADHE	1	SNA
...4		BN81-07943A	A/S-ADHESIVE-A.C.F(TP500B);ADHESIVE-A.C	1	SNA
...4		BN81-09019A	A/S-IC DRIVER SOURCE;IC DRIVER SOURCE,MT	1	SNA
...4		BN81-09020A	A/S-IC DRIVER GATE;IC DRIVER GATE,36CGV0	1	SNA
...4		BN81-09021A	A/S-POLARIZER-C/F;POLARIZER-C/F,SMLK41FP	1	SNA
...4		BN81-09022A	A/S-POLARIZER-TFT;POLARIZER-TFT,NZBEFTCM	1	SNA
...4		BN81-09023A	A/S-ASSY PCB-SOURCE LEFT;ASSY PCB-SOURCE	1	SNA
...4		BN81-09024A	A/S-ASSY PCB-SOURCE RIGHT;ASSY PCB-SOURC	1	SNA
..3	TC01A	BN96-30305A	ASSY CHASSIS TOP P;Y14 U8.5K 55,SDC,BN64	1	SNA
...4		BN02-00309A	TAPE PET-MASKING;Y14 SNB H7K 46,55,60,65	4	SNA
...4		BN60-00954A	SPACER-TOP-UD;Y14 U8.5K 55,PET*,607,BLK,	2	SNA
...4		BN60-00955A	SPACER-TOP-LR;Y14 U8.5K 55,PET*,682,BLK,	2	SNA
...4	AS080	BN63-10029A	SHEET-COVER;UE9500 75",urethane,T0.052,W	1	SNA
...4	AS080	BN63-10494A	SHEET-COVER;rose70",urethane,T0.052,W9.5	3	SNA
...4	AC157	BN64-02544A	CHASSIS-TOP;Y14 U8.5K 55,SDC,STAINLESS,	1	SNA
...4		BN64-02643A	BADGE-BRAND;U8000,U9000,Ni,0.05,28,SILVE	1	SNA
..3		BN96-30308A	ASSY COVER P-SOURCE;Y14 U8.5K 55,SDC,BN6	1	SNA
...4		BN60-00554A	SPACER-SOURCE;SNB 40/46/55,Silicone-Rubb	6	SNA
...4		BN61-09307A	BRACKET-STOPPER NUT;LED TV,M3*D11*L12.6	4	SNA
...4		BN61-09363A	BRACKET-STOPPER NUT;LED TV,B:7 H: 0.4 M3	2	SNA
...4		BN61-10299B	BRACKET-STOPPER NUT;LED TV,CR3,M3,L7.2,D	2	SNA

Exploded Views and Parts List

Level	Loc.	Part Code	Description & Specification	Qty.	SA/SNA
...4		BN62-00522A	INSULATION-S-COVER-L;Y14 U8.5K 55,PET,0.	1	SNA
...4		BN62-00523A	INSULATION-S-COVER-R;Y14 U8.5K 55,PET,0.	1	SNA
...4		BN63-11755A	SHIELD-SOURCE COVER;Y14 U8.5K 55,EGI-SEC	1	SNA
...3	TCON	BN96-30712B	ASSY T CON P;LMF550FJ02-A,PCB-CONTROL,8b	1	SA
...3	OC-TC	BN96-30720C	ASSY CABLE P-FFC;UHD,FFC,NH,65mm,1,68P(4	SNA
...3	SB05A	BN96-31822A	ASSY BRACKET P-STAND LINK;UH8500,55/65,S	1	SNA
...4		BN61-09605A	BRACKET-STOPPER NUT;LED TV F6100,Others	4	SNA
...4		BN61-10459A	BRACKET-STAND-LINK;UH8500,EGI-SECC,12.0,	1	SNA
...4	M0131	BN63-03811A	GASKET;Tulip,Conductive Fabric,10mm,10mm	1	SNA
1		BN91-12414A	ASSY SHIELD;UH8500,55	1	SNA
.2	SCREW	6001-002996	SCREW-MACHINE;FH,+,M3.0,L5.0,ZPC(BLK),SW	13	SA
.2	SCREW	6001-003081	SCREW-MACHINE;PWH,+,M3,L5,ZPC(WHT),SWRCH	15	SA
.2	SCREW	6003-000269	SCREW-TAPTYPE;BH,+,S,M3,L6,ZPC(WHT),SW	2	SA
.2	SCREW	6003-001206	SCREW-TAPTYPE;BH+,B,M3,L4,BLK,SWRCH18A	2	SA
.2		BN02-00102B	TAP FILAMENT;UE7000,#8917,0.15,25,30,WH	0	SNA
.2	EF01	BN31-00036A	EAN;KDB04111HBX02,HU9000 PLASTIC*,12V,4.	1	SA
.2	EC13	BN39-01822K	LEAD CONNECTOR;HU8500 55",LEAD CONNECTOR	1	SA
.2	EC13	BN39-01847D	LEAD CONNECTOR;HU8500 55",LEAD CONNECTOR	1	SA
.2	P001A	BN44-00742A	DC VSS-UHD PD BD;L55G4P_EHS,L55G4P_EHS,A	1	SA
.2	WIFI	BN59-01174A	NETWORK-WIFI MODULE;WIDT-30Q,Internal Wi	1	SA
.2		BN60-00162K	SPACER-FOAM;FOAM,50000mm,DARK GRAY,0.5T,	0	SNA
.2		BN63-11189G	SHEET-SIDE TAPE;U8500,FABRIC,0.135,18mm,	4	SNA
.2	CD01A	BN95-01510A	ASSY DECORATION SMT;UH8500,55,S LVER,PC+	1	SA
...3		BN01-00160A	TARGET-CHROMIUM-CY;Chromium target,99.95	0	SNA
...3		BN01-00161A	TARGET-CHROMIUM-PL;chromium target,over	0	SNA
...3		BN01-00168A	COATING-AFS;99.9% AFS,99.50%,1.5,AF Sput	3	SNA
...3	AS105	BN63-12354A	SHEET-PROTECTION;U8500,PET,0.04,W25.0mm	1	SNA
...3	AD070	BN64-02620A	DECORATION-BOTTOM;HU8500,PC+ABS+GF15%,S	1	SNA
...4		BN74-00053G	TAPE PAPER-PROTECTION;3M2307,PAPER,0.14T	1	SNA
...3		BN68-03682A	LABEL-STICKER;Label,20mm,10mm	1	SNA
.2	JOG	BN96-29508A	ASSY BOARD P-JOG FUNCTION;S9,SUNGJI,FR-4	1	SA
.2	BT	BN96-30218A	ASSY BOARD P-RF-MODULE;Bluetooth Module,	1	SA
.2	FL06	BN96-30261M	ASSY CABLE P;HU8500 55",FFC,NH,320mm,41P	1	SA
.2	FL06	BN96-30262D	ASSY CABLE P;HU8500 55",FFC,NH,415mm,51P	1	SA
.2	SP01A	BN96-30935A	ASSY SPEAKER P;6ohm,10W,Enclosure_U7000	1	SA
.2	IR PBA	BN96-32206A	ASSY BOARD P-IR FUNCTION;HU8500,SJ14-01-	1	SA
.2		BN96-32216A	ASSY BLU P-ACGO;HU8500,M14-HU8500-AA,91m	1	SA
.2		BN96-32234A	ASSY COVER P-DECORATION TOP;UH8500,55,AL	1	SA
...3		BN63-10770G	SHEET-COVER;U8500,PEC,0.039,W17.0mm,100M	3	SNA
...3	FD02	BN64-02616A	DECORATION-TOP;HU8500-55IN,ALCOAT-SA1C,A	1	SNA

Level	Loc.	Part Code	Description & Specification	Qty.	SA/SNA
.2	T0382	BP61-00509C	HOLDER-CARE;PJT,ACRYL-FOAM,T0.25,W20.0mm	0	SNA
1	M0017	BN91-12872R	ASSY CHASSIS;UH8T	1	SNA
.2	M0014	BN94-07588R	ASSY PCB MAIN;UH8T	1	SA
..3		BN61-10507A	HOLDER-SIDE AV;HU8500,HIPS,1T,1NER	1	SNA
..3		BN62-00273B	HEAT SINK-PS;TV Echo-P,A6063,5t,BLACK,40	1	SNA
..3		BN62-00574A	HEAT SINK-ES;F7000,A6063,ANODIZING,28*14	1	SNA
..3		BN62-00618A	HEAT SINK-PS;HU8500,A1050,BLACK,73*118*5	1	SNA
..3		BN62-00619A	HEAT SINK-PS;HU8500,A1050,SILVER,210*250	1	SNA
..3		BN62-00620A	HEAT SINK-ES;HU8500,A6063*,ANODIZING,31.	2	SNA
..3		BN62-00621A	HEAT SINK-ES;HU8500,A6063*,ANODIZING,70*	1	SNA
..3	T0527	BN68-00513A	LABEL-E,PASS;ALL MODEL,YUPO(110G),BLACK,	1	SNA
..3		BN97-07144A	ASSY DEM-KEY;HDCP(BN46-00110N),MAC(BN46-	1	SNA
...4		BN46-00109H	KEY CODE-CERTIFI;MAC,TV/AV,General	1	SNA
...4		BN46-00110N	KEY CODE-CERTIFI;MIRACAST,TV X12 /X13	1	SNA
..3		BN97-08311Z	ASSY SMD;BN94-*	1	SNA
...4		0202-001899	SOLDER-CREAM;M705-GRN360-R2-VT,25-36um,S	3	SNA
...4	DS01A	0401-001056	DIODE-SWITCHING;MMBD4148SE,100V,200mA,SO	2	SA
...4		0403-001407	DIODE-ZENER;MMSZ5242B,11.4-12.6V,500mW,S	1	SA
...4		0403-001783	DIODE-ZENER;BZB84-C6V2,5.8/6.6V,300mW,SO	3	SNA
...4		0404-001404	DIODE-SCHOTTKY;BAT721C,40V,200mA,SOT-23,	4	SA
...4		0404-001881	DIODE-SCHOTTKY;SS3040-HE,40V,3000mA,SOD-	1	SA
...4		0406-001200	DIODE TVS;RCLAMP0504F,6/-/V,150W,SC-70	2	SA
...4		0406-001573	DIODE TVS;AOZ8806DI-05,6	1	SA
...4		0406-001635	DIODE TVS;SMF5.0A-6.4V, 6.7V, 7V,200W,SM	18	SA
...4		0501-000002	TR-SMALL SIGNAL;KSA812-PNP,150mW,SOT-23,	2	SNA
...4		0501-000275	TR-SMALL SIGNAL;KSA1182-Y,PNP,150mW,SOT	3	SA
...4		0501-000445	TR-SMALL SIGNAL;KTC3875S-Y,NPN,150mW,SOT	3	SC
...4		0501-002080	TR-SMALL SIGNAL;2SC2412K,NPN,200mW,SC-59	2	SA
...4		0504-000126	TR-DIGITAL;KSR1101,NPN,200mW,4.7K/4.7Koh	2	SA
...4		0505-001844	FET-SILICON;SI4435DDY-T1-GE3,P-30V,-11.	2	SA
...4		0505-002598	FET-SILICON;AP2317GN,P,-20V,-4.2A,0.052o	1	SA
...4		0505-003397	FET-SILICON;2N7002K,N,60V,380mA,1.19ohm,	6	SA
...4		0801-003330	IC-CMOS LOGIC;Octal buffer,DQFN,20P,4.5x	1	SA
...4		0904-002859	IC-USC;GL852G-32,QFN,28P,5x5mm,12MHz,TP,	1	SA
...4		1001-001545	IC-ANALOG MULTIPLEX;TS3USB221ERSER,R-PQF	2	SA
...4		1001-001686	IC-ANALOG MULTIPLEX;74LV4052,CMOS,TT SOP,	1	SA
...4		1001-001689	IC-ANALOG SWITCH;TS5A23159RSER,QFN,10P,2	8	SA
...4		1001-001828	IC-ANALOG SWITCH;TS3V330PWR,TSSOP,16P,6.	1	SA
...4		1001-001860	IC-ANALOG SWITCH;NX5L2750CGU,QFN,10P,1.4	1	SNA
...4		1001-001885	IC-VIDEO SWITCH;SII9679,QFN,76P,9x9mm,PL	1	SA

Exploded Views and Parts List

Level	Loc.	Part Code	Description & Specification	Qty.	SA/SNA
...4		1001-001886	IC-VIDEO SWITCH;QFP,144P,22*22,PLASTIC,T	2	SA
...4		1006-001509	IC-DRIVER/RECEIVER;MAX3222ECPWR,TSSOP,20	1	SA
...4		1103-001561	IC-EEPROM;S-24C02DI-J800,2Kbit,256X8bit	4	SA
...4		1103-001564	IC-EEPROM;S-24C512CI-J800,512Kbit,64Kx8,	1	SA
...4		1105-002227	IC-DDR3 SDRAM;K4B1G1646G-BCK0,DDR3 SDRAM	4	SA
...4		1105-002274	IC-DDR3 SDRAM;K4B1G1646G-BCMA,DDR3 1866,	7	SNA
...4		1105-002528	IC-DDR3 SDRAM;K4B4G1646D-BCMA,DDR3 1866,	4	SA
...4		1105-002534	IC-DDR3 SDRAM;K4B2G1646Q-BCMA,DDR3 SDRAM	1	SA
...4		1201-003690	IC-AUDIO AMP;TAS5747PHPR,QFP,48P,DUAL,PL	3	SA
...4		1203-004363	IC-VOL. DETECTOR;SOT-23,3Z30,2.9x1.6mm,P	1	SA
...4		1203-006109	IC-POSI.FIXED REG.;S-1206B33-M3TIG,SOT-2	1	SA
...4		1203-006130	IC-POSI.FIXED REG.;S-1172B25-U5T1G,SOT-8	1	SA
...4		1203-006239	IC-POSI.ADJUST REG.;AP1117EGZ-13-89,SOT-	1	SA
...4		1203-006330	IC-POWER SUPERVISOR;TPS2065DBV,SOT-23,5P	1	SA
...4		1203-006341	IC-DC/DC CONVERTER;TPS63020,SON-14,14P,4	1	SA
...4		1203-007018	IC-DC/DC CONVERTER;TPS54821RHL,QFN,14P,3	1	SA
...4		1203-007238	IC-PWM CONTROLLER;TPS54427,DDA,8P,4.8x5.	3	SNA
...4		1203-007663	IC-DC/DC CONVERTER;RT7266ZSP,SOP-8,8Z30,	8	SNA
...4		1203-007695	IC-DC/DC CONVERTER;AOZ3018,SO-8,8Z30,4.9	3	SNA
...4		1203-007728	IC-VOL. DETECTOR;RT9831GQW,QW-WQFN-20L	1	SA
...4		1203-007984	IC-DC/DC CONVERTER;AOZ3015P,SO-8,8P,6.2	1	SA
...4		1203-007985	IC-DC/DC CONVERTER;TPS56920PWPR,HTSSOP,2	3	SA
...4		1203-008104	IC-POSI.FIXED REG.;S-13A1D18-E8001,HSOP,	3	SNA
...4		1203-008112	IC-POSI.ADJUST REG.;AOZ2002PI,SO-8,8P,4.	2	SA
...4		1203-008118	IC-DC/DC CONVERTER;AOZ3013P,SO-8,8P,4.9	1	SNA
...4		1203-008139	IC-DC/DC CONVERTER;TPS56C20PWPR,HTSSOP,2	1	SNA
...4		1203-008185	IC-POSI.FIXED REG.;S-13A1D10-E800,HSOP-8	1	SA
...4		1204-003482	IC-VIDEO PROCESS;SDP1305,FCPBGAH,714P,27	1	SA
...4		1204-003489	IC-VIDEO PROCESS;SDP1301,FCBGA,680P,25x2	1	SA
...4		1204-003497	IC-VIDEO PROCESS;SENK83,EDHS-PBGA,1057P,	1	SA
...4		1204-003506	IC-VIDEO PROCESS;SDP1303,FCPBGAH,1495P,35	1	SA
...4		1204-003522	IC-DECODER;SDP1304,FCPBGAH,715P,27x27mm,	1	SA
...4	IC	1205-004385	IC-ETHERNET CONTROLLER;RTL8201F-VB-CGT,Q	1	SA
...4		1205-004692	IC-SWITCH;TPS2069CDBVR,SOT-23,5P,5.0x3.1	3	SNA
...4		1205-004822	IC-SWITCH;TPS22965DSGR,SON,8P,2x2x0.75mm	1	SNA
...4		1205-004852	IC-BUFFER;DS15BFR100TSQ/NOPB,WQFN,32P,5x5	12	SA
...4		1205-004855	IC-SWITCH;TPS25910RSAR,QFN,16P,4x4x0.8mm	1	SA
...4	1301	1209-002183	IC-SENSOR;S-3851AAA-M6T1U,SOT,6Z30,2.9x1	1	SA
...4		1405-001271	VARISTOR;35V,20Vdc,5A,1.0x0.5x0.6mm,TP,1	6	SA
...4		2007-000052	R-CHIP;10Kohm,1%,1/10W,TP,1608	7	SA

Level	Loc.	Part Code	Description & Specification	Qty.	SA/SNA
...4		2007-000060	R-CHIP;100Kohm,1%,1/10W,TP,1608	2	SNA
...4		2007-000063	R-CHIP;150Kohm,1%,1/10W,TP,1608	1	SNA
...4		2007-000066	R-CHIP;20Kohm,1%,1/10W,TP,1608	1	SNA
...4		2007-000078	R-CHIP;1Kohm,5%,1/10W,TP,1608	1	SA
...4		2007-000090	R-CHIP;10Kohm,5%,1/10W,TP,1608	1	SA
...4		2007-000113	R-CHIP;33ohm,5%,1/10W,TP,1608	11	SA
...4		2007-000138	R-CHIP;100ohm,5%,1/16W,TP,1005	1	SA
...4		2007-000143	R-CHIP;4.7Kohm,5%,1/16W,TP,1005	74	SA
...4		2007-000148	R-CHIP;10Kohm,5%,1/16W,TP,1005	21	SA
...4		2007-000149	R-CHIP;12Kohm,5%,1/16W,TP,1005	1	SA
...4		2007-000157	R-CHIP;47Kohm,5%,1/16W,TP,1005	8	SNA
...4		2007-000161	R-CHIP;82Kohm,5%,1/16W,TP,1005	1	SNA
...4		2007-000171	R-CHIP;0ohm,5%,1/16W,TP,1005	145	SA
...4		2007-000172	R-CHIP;10ohm,5%,1/16W,TP,1005	8	SNA
...4		2007-000173	R-CHIP;22ohm,5%,1/16W,TP,1005	36	SA
...4		2007-000219	R-CHIP;1.2Kohm,1%,1/10W,TP,1608	1	SNA
...4		2007-000297	R-CHIP;10Kohm,1%,1/8W,TP,2012	1	SA
...4		2007-000336	R-CHIP;120Kohm,1%,1/10W,TP,1608	1	SA
...4		2007-000455	R-CHIP;18Kohm,1%,1/10W,TP,1608	2	SA
...4		2007-000512	R-CHIP;2.4Kohm,5%,1/10W,TP,1608	1	SNA
...4		2007-000536	R-CHIP;200ohm,1%,1/10W,TP,1608	2	SA
...4		2007-000583	R-CHIP;22Kohm,1%,1/10W,TP,1608	6	SA
...4		2007-000614	R-CHIP;24Kohm,1%,1/10W,TP,1608	4	SNA
...4		2007-000651	R-CHIP;27Kohm,1%,1/10W,TP,1608	1	SA
...4		2007-000726	R-CHIP;300ohm,1%,1/10W,TP,1608	1	SA
...4		2007-000730	R-CHIP;30Kohm,1%,1/10W,TP,1608	1	SA
...4		2007-000758	R-CHIP;330Kohm,5%,1/16W,TP,1005	2	SNA
...4		2007-000772	R-CHIP;33Kohm,1%,1/10W,TP,1608	2	SA
...4		2007-000816	R-CHIP;390Kohm,1%,1/10W,TP,1608	1	SA
...4		2007-000828	R-CHIP;39Kohm,1%,1/10W,TP,1608	1	SA
...4		2007-000857	R-CHIP;4.3Kohm,1%,1/10W,TP,1608	2	SNA
...4		2007-000869	R-CHIP;4.7Kohm,1%,1/10W,TP,1608	4	SNA
...4		2007-000932	R-CHIP;470ohm,5%,1/16W,TP,1005	7	SA
...4		2007-000939	R-CHIP;47Kohm,1%,1/10W,TP,1608	1	SA
...4		2007-001116	R-CHIP;680ohm,1%,1/10W,TP,1608	2	SA
...4		2007-001125	R-CHIP;68Kohm,1%,1/10W,TP,1608	1	SA
...4		2007-001168	R-CHIP;75ohm,5%,1/4W,TP,3216	2	SA
...4		2007-001288	R-CHIP;18ohm,5%,1/16W,TP,1005	12	SA
...4		2007-001298	R-CHIP;51ohm,5%,1/16W,TP,1005	3	SNA
...4		2007-001308	R-CHIP;200ohm,5%,1/16W,TP,1005	1	SNA

Exploded Views and Parts List

Level	Loc.	Part Code	Description & Specification	Qty.	SA/SNA
...4		2007-001320	R-CHIP;1.8Kohm,5%,1/16W,TP,1005	2	SA
...4		2007-001333	R-CHIP;18Kohm,5%,1/16W,TP,1005	4	SA
...4		2007-001335	R-CHIP;36Kohm,5%,1/16W,TP,1005	2	SA
...4		2007-002796	R-CHIP;510ohm,5%,1/16W,TP,1005	4	SA
...4		2007-003015	R-CHIP;2.2ohm,5%,1/16W,TP,1005	8	SNA
...4		2007-007095	R-CHIP;390ohm,5%,1/16W,TP,1005	1	SNA
...4		2007-007107	R-CHIP;100Kohm,1%,1/16W,TP,1005	20	SNA
...4		2007-007131	R-CHIP;13Kohm,1%,1/16W,TP,1005	1	SA
...4		2007-007136	R-CHIP;4.7Kohm,1%,1/16W,TP,1005	15	SNA
...4		2007-007137	R-CHIP;1.2Kohm,1%,1/16W,TP,1005	2	SA
...4		2007-007138	R-CHIP;27Kohm,1%,1/16W,TP,1005	4	SA
...4		2007-007139	R-CHIP;47Kohm,1%,1/16W,TP,1005	10	SA
...4		2007-007142	R-CHIP;10Kohm,1%,1/16W,TP,1005	65	SA
...4		2007-007156	R-CHIP;1ohm,5%,1/16W,TP,1005	6	SA
...4		2007-007306	R-CHIP;100ohm,1%,1/16W,TP,1005	37	SNA
...4		2007-007307	R-CHIP;150ohm,1%,1/16W,TP,1005	3	SA
...4		2007-007309	R-CHIP;12Kohm,1%,1/16W,TP,1005,0.35	2	SA
...4		2007-007311	R-CHIP;22Kohm,1%,1/16W,TP,1005	10	SA
...4		2007-007312	R-CHIP;20Kohm,1%,1/16W,TP,1005	4	SA
...4		2007-007313	R-CHIP;6.8Kohm,1%,1/16W,TP,1005	1	SA
...4		2007-007314	R-CHIP;5.6Kohm,1%,1/16W,TP,1005	1	SA
...4		2007-007316	R-CHIP;3.3Kohm,1%,1/16W,TP,1005	1	SNA
...4		2007-007318	R-CHIP;1Kohm,1%,1/16W,TP,1005	78	SA
...4		2007-007470	R-CHIP;7.5Kohm,1%,1/16W,TP,1005	8	SNA
...4		2007-007517	R-CHIP;240ohm,1%,1/16W,TP,1005	29	SNA
...4		2007-007526	R-CHIP;23.7Kohm,1%,1/10W,TP,1608	1	SA
...4		2007-007538	R-CHIP;56Kohm,1%,1/16W,TP,1005	3	SA
...4		2007-007588	R-CHIP;1.8Kohm,1%,1/16W,TP,1005	1	SA
...4		2007-007617	R-CHIP;2.49Kohm,1%,1/10W,TP,1608	1	SA
...4		2007-007671	R-CHIP;11Kohm,1%,1/16W,TP,1005	2	SA
...4		2007-007698	R-CHIP;5.1Kohm,1%,1/16W,TP,1005	2	SA
...4		2007-007720	R-CHIP;300Kohm,1%,1/10W,TP,1608	1	SA
...4		2007-007733	R-CHIP;51ohm,1%,1/10W,TP,1608	4	SA
...4		2007-007736	R-CHIP;510Kohm,1%,1/10W,TP,1608	1	SA
...4		2007-007766	R-CHIP;2Kohm,1%,1/16W,TP,1005	32	SA
...4		2007-007767	R-CHIP;200ohm,1%,1/16W,TP,1005	2	SA
...4		2007-007791	R-CHIP;9.1Kohm,1%,1/16W,TP,1005	1	SNA
...4		2007-007797	R-CHIP;44.2ohm,1%,1/10W,TP,1608	2	SA
...4		2007-007798	R-CHIP;10ohm,1%,1/16W,TP,1005	1	SA
...4		2007-007830	R-CHIP;14Kohm,1%,1/10W,TP,1608	1	SA

Level	Loc.	Part Code	Description & Specification	Qty.	SA/SNA
...4		2007-007861	R-CHIP;62Kohm,1%,1/16W,TP,1005	2	SA
...4		2007-007942	R-CHIP;1Mohm,1%,1/16W,TP,1005	10	SNA
...4		2007-008015	R-CHIP;75ohm,1%,1/16W,TP,1005	7	SA
...4		2007-008026	R-CHIP;56ohm,1%,1/16W,TP,1005	1	SA
...4		2007-008133	R-CHIP;56.2Kohm,1%,1/10W,TP,1608	1	SA
...4		2007-008213	R-CHIP;4.3Kohm,1%,1/16W,TP,1005	13	SA
...4		2007-008269	R-CHIP;51Kohm,1%,1/16W,TP,1005	7	SA
...4		2007-008275	R-CHIP;30Kohm,1%,1/16W,TP,1005	3	SNA
...4		2007-008294	R-CHIP;33ohm,1%,1/16W,TP,1005	6	SA
...4		2007-008332	R-CHIP;11.5Kohm,1%,1/16W,TP,1005	1	SA
...4		2007-008391	R-CHIP;6.34Kohm,1%,1/16W,TP,1005	1	SA
...4		2007-008779	R-CHIP;0ohm,1%,1/16W,TP,1005	11	SA
...4		2007-009117	R-CHIP;49.9Kohm,1%,1/16W,TP,1005	1	SA
...4		2007-009853	R-CHIP;1.6Kohm,1%,1/16W,TP,1005	1	SNA
...4		2011-001396	R-NETWORK;4.7Kohm,5%,1/16W,L,CHIP,8P,TP,	1	SNA
...4		2011-001449	R-NETWORK;22ohm,5%,1/16W,L,4P,TP,1010	11	SA
...4		2011-001497	R-NETWORK;470ohm,5%,1/16W,L,CHIP,4P,TP,1	3	SNA
...4		2011-001506	R-NETWORK;10Kohm,5%,1/16W,L,CHIP,4P,TP,1	4	SA
...4		2011-001527	R-NETWORK;4.7Kohm,5%,1/16W,L,CHIP,4P,TP,	3	SA
...4		2011-001587	R-NETWORK;100ohm,5%,1/16W,L,CHIP-V,4P,TP	2	SA
...4		2011-001590	R-NETWORK;47Kohm,5%,1/16W,L,CHIP-V,4P,TP	1	SNA
...4	AD480	2203-000233	C-CER,CHIP;0.1nF,5%,50V,COG,TP,1005	12	SA
...4	AD480	2203-000254	C-CER,CHIP;10nF,10%,16V,X7R,TP,1005	1	SA
...4	AD480	2203-000257	C-CER,CHIP;10nF,10%,50V,X7R,TP,1608	1	SA
...4	AD480	2203-000278	C-CER,CHIP;0.01nF,0.5pF,50V,COG,TP,1005	1	SA
...4	AD480	2203-000330	C-CER,CHIP;0.012nF,5%,50V,COG,TP,1005	13	SA
...4	AD480	2203-000386	C-CER,CHIP;0.015nF,5%,50V,COG,TP,1005	2	SA
...4	AD480	2203-000425	C-CER,CHIP;0.018nF,5%,50V,COG,TP,1005	3	SA
...4	AD480	2203-000438	C-CER,CHIP;1nF,10%,50V,X7R,TP,1005	55	SA
...4	AD480	2203-000440	C-CER,CHIP;1nF,10%,50V,X7R,TP,1608	1	SA
...4	AD480	2203-000489	C-CER,CHIP;2.2nF,10%,50V,X7R,TP,1005	13	SA
...4	AD480	2203-000530	C-CER,CHIP;2.7nF,10%,50V,X7R,TP,1005,-	1	SNA
...4	AD480	2203-000585	C-CER,CHIP;0.22nF,10%,50V,X7R,TP,1005	3	SA
...4	AD480	2203-000627	C-CER,CHIP;0.022nF,5%,50V,COG,TP,1005	3	SNA
...4	AD480	2203-000714	C-CER,CHIP;3.3nF,10%,50V,X7R,TP,1005	5	SA
...4	AD480	2203-000812	C-CER,CHIP;0.033nF,5%,50V,COG,TP,1005	7	SA
...4	AD480	2203-000940	C-CER,CHIP;0.47nF,10%,50V,X7R,TP,1005	2	SA
...4	AD480	2203-001211	C-CER,CHIP;8.2nF,10%,50V,X7R,TP,1608	1	SA
...4	AD480	2203-001634	C-CER,CHIP;33nF,10%,50V,X7R,TP,1608	4	SA
...4	AD480	2203-001697	C-CER,CHIP;0.082nF,5%,50V,NP0,TP,1608	1	SNA

Exploded Views and Parts List

Level	Loc.	Part Code	Description & Specification	Qty.	SA/SNA
...4	AD480	2203-002050	C-CER,CHIP;47nF,10%,50V,X7R,TP,1608	1	SA
...4	AD480	2203-002285	C-CER,CHIP;10nF,10%,50V,X7R,TP,1005	23	SNA
...4	AD480	2203-002711	C-CER,CHIP;100nF,10%,25V,X7R,TP,1608	5	SA
...4	AD480	2203-002982	C-CER,CHIP;6.8nF,10%,50V,X7R,TP,1005	5	SA
...4	AD480	2203-003019	C-CER,CHIP;8.2nF,10%,50V,X7R,TP,1005	1	SNA
...4	AD480	2203-003039	C-CER,CHIP;0.008nF,0.25pF,50V,COG,TP,100	8	SA
...4	AD480	2203-005005	C-CER,CHIP;100nF,10%,16V,X7R,TP,1608	4	SC
...4	AD480	2203-005054	C-CER,CHIP;0.0047nF,0.25pF,50V,NP0,TP,10	1	SA
...4	AD480	2203-005138	C-CER,CHIP;1.8nF,10%,50V,X7R,TP,1005	13	SA
...4	AD480	2203-005221	C-CER,CHIP;15nF,10%,50V,X7R,TP,1608	2	SNA
...4	AD480	2203-005249	C-CER,CHIP;10nF,10%,50V,X7R,TP,1608	22	SA
...4	AD480	2203-005344	C-CER,CHIP;22nF,10%,25V,X7R,TP,1005,0.5T	18	SNA
...4	AD480	2203-005968	C-CER,CHIP;4.7nF,10%,50V,X7R,TP,1005,0.5	6	SNA
...4	AD480	2203-006047	C-CER,CHIP;33nF,10%,16V,X7R,TP,1005	1	SA
...4	AD480	2203-006048	C-CER,CHIP;100nF,10%,10V,X7R,TP,1005	354	SA
...4	AD480	2203-006126	C-CER,CHIP;47nF,10%,16V,X7R,TP,1005	9	SNA
...4	AD480	2203-006158	C-CER,CHIP;100nF,10%,16V,X7R,TP,1005,0.5	366	SA
...4	AD480	2203-006307	C-CER,CHIP;1000nF,10%,25V,X5R,TP,2012	3	SNA
...4	AD480	2203-006324	C-CER,CHIP;2200nF,10%,10V,X5R,TP,1608	5	SA
...4	AD480	2203-006348	C-CER,CHIP;1000nF,10%,25V,X5R,TP,1608,0.	9	SA
...4	AD480	2203-006361	C-CER,CHIP;10000nF,10%,10V,X5R,TP,2012	15	SC
...4	AD480	2203-006474	C-CER,CHIP;22000nF,20%,6.3V,X5R,TP,2012	14	SA
...4	AD480	2203-006562	C-CER,CHIP;1000nF,10%,10V,X5R,TP,1005	90	SNA
...4	AD480	2203-006636	C-CER,CHIP;220nF,10%,25V,X7R,TP,1608	18	SA
...4	AD480	2203-006698	C-CER,CHIP;1000nF,10%,25V,X7R,TP,1608,0.	4	SA
...4	AD480	2203-006741	C-CER,CHIP;470nF,10%,25V,X5R,TP,1608,0.8	1	SNA
...4	AD480	2203-006824	C-CER,CHIP;4700nF,10%,10V,X5R,TP,1608	13	SNA
...4	AD480	2203-006890	C-CER,CHIP;10000nF,20%,6.3V,X5R,TP,1608	74	SNA
...4	AD480	2203-006992	C-CER,CHIP;0.33nF,5%,50V,COG,TP,1005	2	SNA
...4	AD480	2203-007176	C-CER,CHIP;10000nF,10%,16V,X5R,TP,2012,1	21	SNA
...4	AD480	2203-007240	C-CER,CHIP;22000nF,20%,6.3V,X5R,TP,1608,	60	SA
...4	AD480	2203-007269	C-CER,CHIP;22000nF,20%,10V,X5R,TP,2012,0	52	SNA
...4	AD480	2203-007306	C-CER,CHIP;10000nF,10%,25V,X5R,TP,2012,1	23	SNA
...4	AD480	2203-007513	C-CER,CHIP;10000nF,10%,10V,X5R,TP,1608,0	130	SA
...4	AD480	2203-007544	C-CER,CHIP;100nF,10%,50V,X7R,TP,1005	66	SA
...4	AD480	2203-007569	C-CER,CHIP;0.033nF,5%,50V,COG,TP,1005	4	SA
...4	AD480	2203-008315	C-CER,CHIP;22000nF,20%,25V,X5R,TP,2012,1	1	SA
...4		2402-001268	C-AL,SMD;100uF,20%,25V,WT,TP,8x6.3mm	6	SA
...4		2409-001191	C-ORGANIC,SMD;47uF,20%,20V,TP,7343(1.9T)	1	SA
...4		2409-001213	C-ORGANIC,SMD;150uF,20%,6.3V,-,TP,3.5x2.	2	SNA

Level	Loc.	Part Code	Description & Specification	Qty.	SA/SNA
...4		2409-001338	C-POLYMER ,CHIP;47uF,20%,6.3V,TP,3.2x1.6	3	SA
...4		2503-001051	C-NETWORK;100nFx4,20%,16V,2012	1	SA
...4		2703-000158	INDUCTOR-SMD;1uH,10%,2012,40hm,50mA,45,	2	SA
...4		2703-001229	INDUCTOR-SMD;2.2uH,10%,1608,1.150hm,15mA	1	SC
...4		2703-001938	INDUCTOR-SMD;56nH,5%,1005,1.50hm,200mA,1	2	SA
...4		2703-002841	INDUCTOR-SMD;1uH,20%,10x10mm,003ohm,210	1	SA
...4		2703-003135	INDUCTOR-SMD;4.7uH,20%,6965,0.040hm,7000	1	SNA
...4		2703-003149	INDUCTOR-SMD;2.2uH,20%,5050,0.0550hm,300	3	SA
...4		2703-003263	INDUCTOR-SMD;3.3uH,20%,10.0x10.0mm,0.011	2	SNA
...4		2703-003713	INDUCTOR-SMD;1.5uH,20%,7366,0.015ohm,700	7	SA
...4		2703-003790	INDUCTOR-SMD;4.7uH,20%,8080,0.025ohm,450	1	SA
...4		2703-003824	INDUCTOR-SMD;3.3uH,20%,7070	1	SA
...4		2703-003937	INDUCTOR-SMD;1uH,20%,7.0x6.47x3.0mm,0.00	5	SA
...4		2703-004724	INDUCTOR-SMD;8.2uH,20%,5050,4mm,0.0720hm	12	SA
...4		2801-000102	CRYSTAL-SMD;12MHz,30ppm,12pF,100ohm,TP	3	SA
...4		2801-003856	CRYSTAL-SMD;0.032768MHz,20ppm,28-ACF,7pF	1	SNA
...4		2801-004613	CRYSTAL-SMD;24MHz,50ppm,8pF,100ohm,TP	3	SA
...4		2801-004814	CRYSTAL-SMD;25MHz,50ppm,8pF,100ohm,TP	2	SA
...4		2801-005292	CRYSTAL-SMD;24.576MHz,30ppm,4 PIN,12pF,7	1	SA
...4		2801-005324	CRYSTAL-SMD;27MHz,30ppm,Ceramic SMD(4pin	2	SA
...4		2801-005373	CRYSTAL-SMD;156.25MHz,50ppm,TP	1	SA
...4		3301-002039	BEAD-SMD;26ohm,1608,TP	187	SA
...4		3601-001374	FUSE-SURFACE MOUNT;32V,5A,FAST-ACTING,PL	6	SA
...4		3701-001856	CONNECTOR-HDMI;19P,2ROW,FEMALE,SMD-S,AU	1	SA
...4		3701-001861	CONNECTOR-HDMI;19P,2ROW,FEMALE,SMD-A,AU	3	SA
...4		3707-001104	CONNECTOR-OPTICAL;SMD-A(Ultra Slim),SPDI	1	SA
...4		3708-003073	CONNECTOR-FPC/FPC/PIC;51P,0.5mm,SMD,AU,N	1	SA
...4		3708-003183	CONNECTOR-FPC/FPC/PIC;41P,0.5mm,SMD-A,AU	1	SA
...4		3710-003901	SOCKET-INTERFACE;34P,2R,0.5mm,SMD-A,AU,B	1	SA
...4	EH01	3711-007412	HEADER-BOARD TO CABLE;BOX,30P,1R,1.25mm,S	1	SA
...4		3711-007741	CONNECTOR-HEADER;BOX,14P,2R,2.0mm,ANGLE,	1	SA
...4	EH01	3711-008558	HEADER-BOARD TO CABLE;BOX,26P,2R,1.25mm,	1	SA
...4	EH01	3711-008739	HEADER-BOARD TO CABLE;BOX,30P,2R,2.0mm,A	1	SA
...4		3722-003226	JACK-PHONE;7P/1C,SN,BLK	1	SA
...4		3722-003229	JACK-MODULAR;8P/8C W/L,Y,STRAIGHT,N,Au,1	1	SA
...4		3722-003457	JACK-USB;4P/1C,NI,BLK,A	2	SA
...4	JACK PIN	3722-003546	JACK-PIN;5P+Screw hole,NI+SN,G,Y/BLU/RED	1	SA
...4		3722-003617	JACK-PHONE;14P/2C,SN,BLK,STRAIGHT,3.6PI,	1	SA
...4		3722-003725	JACK-PIN;3P,NI+SN,YEL/WHT/RED,STRAIGHT	1	SA
...4		3722-003837	JACK-USB;9P/1C,AU/SN/NI,BLU,SMD-A,A,3.0,	1	SA

Exploded Views and Parts List

Level	Loc.	Part Code	Description & Specification	Qty.	SA/SNA
...4		BN13-00067A	PLD;MAXQ636V-2591+T,WLP,9	1	SNA
...4	ET01	BN40-00284A	TUNER;DTOS40EIH276B,DTOS40EIH276B,DVB-TC	1	SA
...4		BN41-02205B	PCB MAIN;FR-4,8,1.6T,235*270,1	1	SNA
...4		BN68-04746A	LABEL-SMD;all model,POLY*,25.4mm x 9.53m	1	SNA
...4		BN97-08446A	ASSY MICOM-MAIN;T-GFP8UABC,U8GA,ASIA,KLM	1	SNA
...5		1107-002300	IC-EMMC;KLM8G1GEAC-C021,8GByte,BGA,153P,	1	SNA
...5	T0527	AA68-03540A	LABEL-MICOM;ART PAPER 7X6mm	1	SNA
...4		BN97-08448A	ASSY MICOM-SUB;SUBMICOM_EU,U8GA,ELWT61P	1	SNA
...5		0903-001863	IC-MICROCONTROLLER;WT61P807-RG48,LQFP,48	1	SA
...4		BN97-08449A	ASSY MICOM-FRC;MT72324_SPI,U8GA,W25Q16DV	1	SNA
...4		BN97-08691A	ASSY MICOM-FRC;GOLF_N_SPI,U8GA,W25Q128FV	1	SNA
...5		1107-002210	IC-NOR FLASH;W25Q128FV51G,128Mbit,128Mx1	1	SA
...4		BN97-08840A	ASSY MICOM-SPI FW;U8GA,SH9679_FW_****,I	1	SNA
...5		1107-002223	IC-NOR FLASH;W25Q16DV55G,16Mbit,2Mbitx8	1	SNA
1		BN92-14354P	ASSY BOX;UH8500,55	1	SNA
.2		BH68-00697A	LABEL BOX-00,ALL MODEL,MOJO 90G,60,100,W	1	SNA
.2		BN69-10089H	BOX-SET;55UH8500-TS,CB A-01,EW3,YEL,W136	2	SNA
1		BN92-14359A	ASSY P/MATERIAL;UH8500,55	1	SNA
.2		6902-001610	BAG FOLII;HDPE/PE FOAM,T0.5/T0.015,W900,L	3	SNA
.2		6922-000013	BAND PP;PP,W18,L2300/L2900,TRP	1	SNA
.2		BH69-00418A	BAG WRAPPING;LDPE,762,1828M,3AMEX FACTOR	2	SNA
.2		BN68-02422B	LABEL-WARNING SHIPPING;ALL MODEL,A/P 100	1	SNA
.2		BN69-00291E	PAD-ANGLE;DI19PS,PAPER,T5,50,1500 YEL	1	SNA
.2		BN69-09635A	CUSHION-FRONT;55UH7000,EPS,16.7g/L,SNB	1	SNA
.2		BN69-09863A	CUSHION-SET;55UH8500-TS,EPS,W/W	1	SNA
.2		BN74-00008D	TAPE-OPP MASKING;OPP,T0.05,W75,L800M,CLR	3	SNA
1		BN92-15020Q	ASSY LABEL,UH9V	1	SNA
.2		BN68-04577A	LABEL-SERVICE STICKER;TV,XY,Art Paper,T0	1	SNA
.2		BN68-05050A	LABEL-RATING;ALL,S3,PE,T0.05,93,73,Dark	1	SNA
.2		BN68-05220A	LEAFLET-02,QR CODE;ALL,ENG,XY,W/P80G,A4	1	SNA
.2		BN68-06067B	LABEL-ENERGY;U8GA,XY,PET,T0.170,116,Ene	1	SNA
.2		BN68-06127A	LABEL-01,HIGHLIGHT POP;U8000/7000 Series	1	SNA
.2		BN74-00053G	TAPE PAPER-PROTECTION;M2307,PAPER,0.14T	0	SNA
1	ACCE1	BN92-15492E	ASSY ACCESSORY;UH8U	1	SNA
.2		BN96-31180A	ASSY ACCESSORY-CM;UA48 / 55HU8500WXXY	1	SNA
...3	T0268	3903-000845	CBF-POWER CORD;DT,SAA,LP-15AL,250V,2.5A,	1	SA
...3		4301-000101	BATTERY-ALKALINE;1.5V,1650mAH,LR6,14.5x5	2	SNA
...3	REMO3	BN59-01181B	REMOCON-14SMART TOUCH CONTROL;TM1480,28,	1	SA
...3		BN68-02298C	LABEL-STICKER;TV,XY,ART PAPER,T0.05,93,4	1	SNA
...3		BN68-04972A	MANUAL FLYER-06,REGULATORY GUI;ALL,SAMSU	1	SNA

Level	Loc.	Part Code	Description & Specification	Qty.	SA/SNA
..3		BN68-05723A	LABEL-ACCESSORY;ALL MODELS,YUPO,0.2,20,7	1	SNA
..3		BN68-05864B	LEAFLET-03,3D GLASSES GUIDE;SSG-5100GB,S	1	SNA
..3		BN68-05952D	LEAFLET-QSG;UHD8500,INDIA,ART PAPER GLOS	1	SNA
..3		BN68-05971A	LEAFLET-01,WARRANTY CARD;com, Samsung,EN	1	SNA
..3		BN68-06062A	MANUAL USERS-03;UHD8500,ENG,XY,W/P,B5	1	SNA
..3		BN69-08751A	WRAP VINYL-SHRINK;STAND,PLASTIC OTHERS,P	0	SNA
..3		BN69-10158A	BOX-ACCESSORY;H8000_ACCESSORY,CB,SERP Re	1	SNA
..3		BN69-10159A	PAD-TYPE;H8000_ACCESSORY,PAPER,W366,L182	1	SNA
..3		BN69-10160A	PAD-TYPE;H8000_ACCESSORY,CB,SERP Recycle	1	SNA
..3		BN69-10161A	PAD-TYPE;H8000_ACCESSORY,CB,SERP Recycle	1	SNA
..3	3DGLA	BN96-27418A	ASSY ACCESSORY 3D GLASSES;SSG-5100GB,3D	2	SC
..3	CAIR	BN96-31644A	ASSY CABLE P;IR BLASTER,UL1185 28AWG,2,5	1	SA