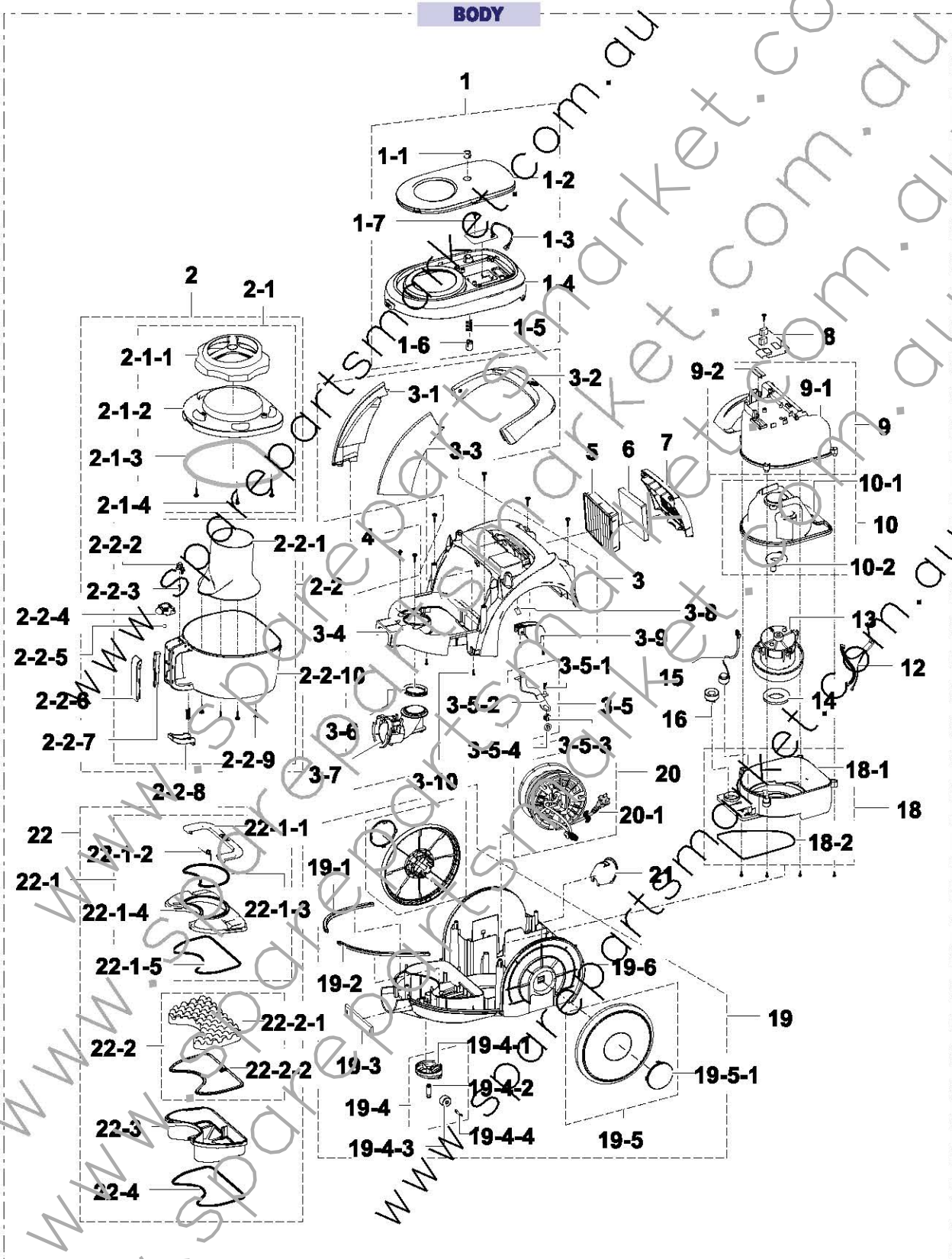


# 1. BODY

## Exploded View



## Parts List

No.	Lvl.	Loc.	Material Code	Description & Specification	SNA	Qty.
1	1	RB026	DJ97-01141H	ASSY COVER DUST; SC6760,TORCH RED,H-TYPE,	SA	1
1-1	2	RL130	DJ64-00131A	WINDOW LAMP; VC-870,PC,CLEAR	SNA	1
1-2	2	RB097	DJ63-00848G	COVER ATTACHMENT; SC6760,ABS,TORCH RED,18	SA	1
1-3	2	RJ091	DJ41-00437B	PBA DISPLAY JAZZ,62X38,N,JAZZ/H-VR	SA	1
1-4	2	RB105	DJ63-00850B	COVER DUST; SC6780,ABS,TORCH RED	SA	1
1-5	2		DJ61-01483B	SPRING ETC-COVER; SC6750,HSWR,CD0.8,ID6.2	SNA	1
1-6	2		DJ61-01465A	HOLDER SPRING; SC6750,ABS,LIGHT GRY	SNA	1
1-7	2	RV005	6003-000168	SCREW-TAPTYPE; PH,+,-,B,M3,LS,ZPC(WHT),SW	SNA	1
2	1	RP045	DJ97-01132L	ASSY CYCLONE CASE; SC6890,TORCH RED,SIL NANO	SA	1
2-1	2	RL007	DJ97-01133B	ASSY COVER CYCLONE; SC6780,TORCH RED	SA	1
2-1-1	3	RL067	DJ63-00849A	COVER-CYCLONE; SC6750,ABS,GRY TRP	SNA	1
2-1-2	3		DJ64-00766B	DECORATION-CYCLONE; SC6780,ABS,TORCH RED	SNA	1
2-1-3	3	RL078	DJ63-00510H	GASKET-CYCLONE; SC6750,EVA FOAM,T3.0,W4.5	SNA	1
2-1-4	3	RV005	6003-000170	SCREW-TAPTYPE; PH,+,-,B,M4,L12,ZPC(WHT),S	SNA	4
2-2	2	RL005	DJ97-01134L	ASSY CASE; SC6890,TORCH RED,SIL NANO	SA	1
2-2-1	3	RL048	DJ61-01462A	CASE-CYCLONE I; SC6750,ABS,-,CLEAR GRAY,H	SA	1
2-2-2	3	RL158	DJ66-00494C	LEVER-CYCLONE UP; SC6750,ABS,SD0170,BLACK	SA	1
2-2-3	3		DJ61-01488A	SPRING ETC-CYCLONE; SC6750,HSWR,CD0.5,ID4	SNA	1
2-2-4	3	RL035	DJ64-00762A	BUTTON-CYCLONE; SC6750,ABS,DA SIL	SA	1
2-2-5	3		DJ61-01496A	STOPPER-BUTTON; SC6750,SUS,SILVER,SILVER	SNA	1
2-2-6	3	RL045	DJ67-00545B	CAP-HANDLE CYCLONE; SC6780,ABS,TORCH RED	SA	1
2-2-7	3		DJ64-00763A	BUTTON-GUIDE; SC6750,ABS,LIGHT GRY	SNA	1
2-2-8	3	RL155	DJ66-00493B	LEVER CYCLONE LOW; JAZZ,ABS,BLK,HI IMPACT	SA	1
2-2-9	3	RV005	6003-000170	SCREW-TAPTYPE; PH,+,-,B,M4,L12,ZPC(WHT),S	SNA	4
2-2-10	3		DJ61-01461B	CASE-CYCLONE; VC-BE810,ABS,GRY TRP,NANO S	SNA	1
3	1	RB009	DJ97-01129D	ASSY BODY MID; VC-BE810,TORCH RED,HEPA,DA	SA	1
3-1	2	RB239	DJ64-00767A	DECORATION-MID L; SC6750,ABS,DA SIL	SA	1

No.	Lvl.	Loc.	Material Code	Description & Specification	SNA	Qty.
3-2	2	RB038	DJ97-01131A	ASSY HANDLE; SC6750,DA SIL,COATING	SA	1
3-3	2	RB240	DJ64-00768A	DECORATION-MID R; SC6750,ABS,DA SIL	SA	1
3-4	2	RB059	DJ61-01460B	BODY MID; SC6780,ABS,TORCH RED	SNA	1
3-5	2	RJ012	DJ97-01130A	ASSY LEVER BRAKE; SC6750,TRF,PC,ASSY	SA	1
3-5-1	3		DJ61-70001V	SPRING ETC-BRAKE; SATURN,HSWR,CD0.7,ID6.0	SNA	1
3-5-2	3	RJ075	DJ66-00492A	LEVER BRAKE; SC6750,PC,NTR	SNA	1
3-5-3	3		DJ66-00041A	SHAFT-BRAKE; VC-8600,POM	SNA	1
3-5-4	3	RJ098	DJ73-00016A	STOPPER-BRAKE VC-8600,CR,BLK	SA	1
3-6	2	RA081	DJ62-00169A	SEAL DUCT; SC8450,PVC,SUB GRY	SNA	1
3-7	2	RB139	DJ67-00546A	DUCT-INLET; SC6750,ABS,BLK	SA	1
3-8	2		DJ63-00508E	FILTER SAFETY; SC9150,PU FOAM,T5,W80,L60,	SNA	1
3-9	2	RL168	DJ61-01020A	HOLDER-LEVER; SC6500,ABS,NTR	SNA	1
3-10	2	RV005	6003-000171	SCREW-TAPTTYPE; PH,+,-,NO,B,M4,L16,ZPC(WHT).	SNA	4
4	2	RV005	6002-000168	SCREW-TAPTTYPE; PH,+,-,B,M3,L8,ZPC(WHT),SW	SNA	1
5	1	RA023	DJ97-00492N	ASSY FILTER OUTLET; SC67G0,HEPA H13,LIGHT	SA	1
6	2	RP228	DJ63-00864A	FILTER OUTLET; SC6750,PU FOAM,T10,W120,L9	SA	1
7	2	RB149	DJ64-00769A	GRILLE BACK; SC6750,ABS,DA SIL	SA	1
8		RJ094	DJ41-00451A	PBA MAIN; JAZZ,19X63,N,JAZZ/MICOM	SA	1
9	3	RJ007	DJ97-01154A	ASSY CASE MOTOR UP; SC6750,NTR,NH	SA	1
9-1	4	RJ024	DJ61-01463A	CASE MOTOR-UP; SC6750,PP,-,BLACK,HB,SSPP-	SA	1
9-2	4		DJ69-00214A	GASKET H/SINK; PVC,BLK,SC4030/3.0g	SNA	1
10	3	RJ006	DJ97-00500A	ASSY CASE MOTOR MID; SC6500,PP NTR,-,NH	SA	1
10-1	4	RJ023	DJ61-00927A	CASE MOTOR-MID; SC6500,PP,NTR,NH MOTOR TY	SNA	1
10-2	4	RP223	DJ69-00398A	CUSHION-RING; TPV,OD45.5,ID33.5,H66.6,BLK	SA	1
12	2	RJ063	DJ39-20260Z	HARNES MOTOR; SC8450,BLU/BLK,#18,YH396-0	SA	1
13	2	RJ079	DJ31-00067P	MOTOR FAN-AC; VCM-K70GUAA,8.4A,50/60HZ,18	SA	1
14	2	RP358	DJ73-10173A	CUSHION-RING; NR FOAM,D44/20,BLK,VC-5500	SA	1
15	1	RJ011	DJ96-00106D	ASSY SWITCH-PRESSURE; SATURN,2100mmH2O,BL	SA	1
16	1	RB032	DJ66-60134C	ASSY DAMPER; VC7550,HSWR,MISTY GRY,L48	SA	1

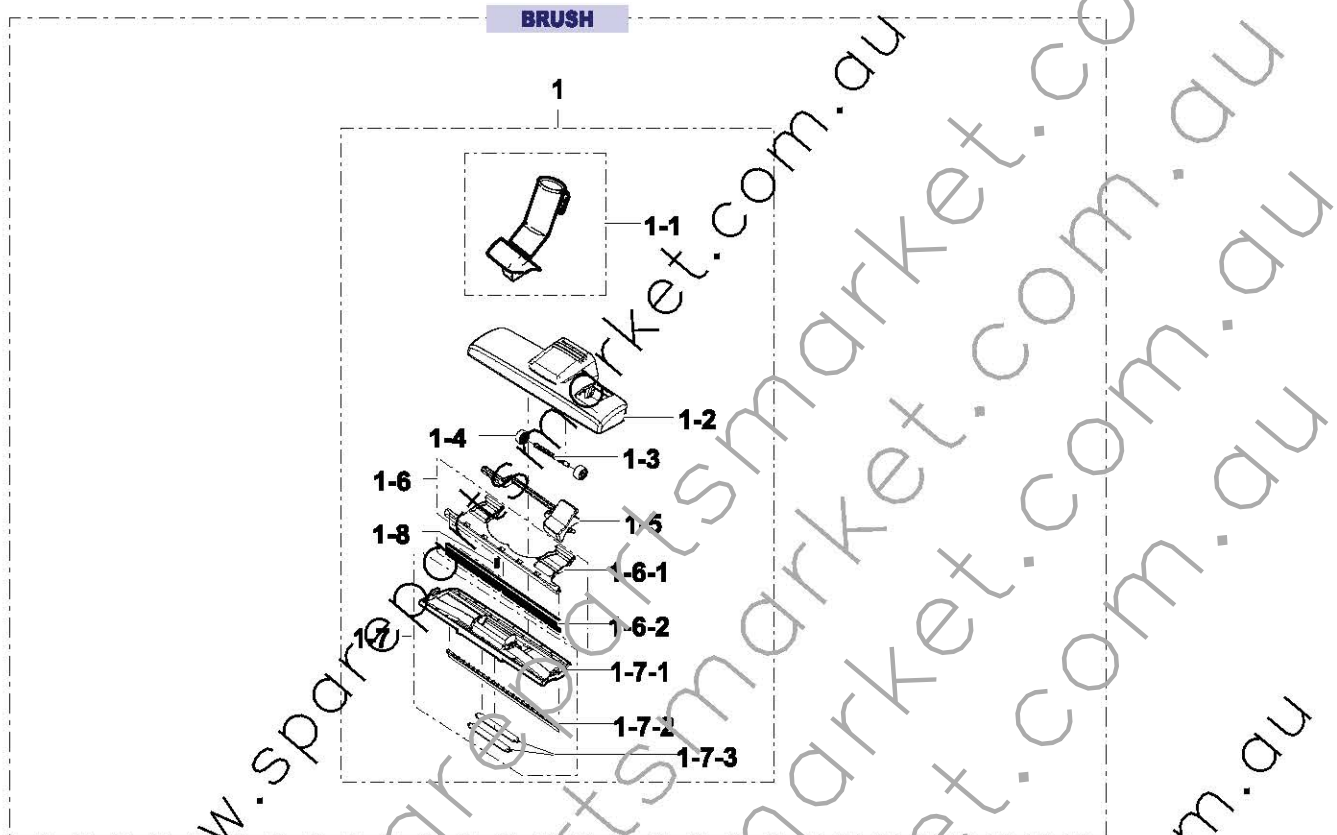
## Exploded Views and Parts List

No.	Lvl.	Loc.	Material Code	Description & Specification	SNA	Qty.
18	2	RJ005	DJ97-00491A	ASSY CASE MOTOR LOW; SC6500,PP NTR,-,-,HO	SA	1
18-1	3	RJ022	DJ61-00921A	CASE MOTOR-LOW; SC6500,PP,NTR,SWITCH PRES	SNA	1
18-2	3	RB148	DJ63-00509D	GASKET-BASE; SATURN-PJT,EVA FOAM,T3.5,L20	SNA	1
19	1	RB002	DJ97-00499T	ASSY BODY BASE; SC6750,BLK,-,TORCH RED,WH	SA	1
19-1	2	RB049	DJ72-00324A	BAND BODY-L; SC6500,PVC,BLK	SA	1
19-2	2	RB050	DJ72-00325A	BAND BODY-R; SC6500,PVC,BLK	SA	1
19-3	2	RP225	DJ63-00599A	FILTER GRILLE; SC6500,PP,T4,W24.7,L110.5,	SA	1
19-4	2	RP112	DJ66-00151C	ASSY ROLLER FRONT; FRONT,SC7800,BLACK + N	SA	1
19-4-1	3	RB168	DJ61-00320A	HOLDER-BACK; VC-8716V BC-PJT,PA,-,BLACK,-	SNA	1
19-4-2	3	RP327	DJ66-00228A	SHAFT ROLLER; SC7800,ABS,BLACK,SD-0170	SA	1
19-4-3	3	RP101	DJ66-70100A	ASSY ROLLER; VC550P,NEUTRAL GRY	SA	1
19-4-4	3	RP294	DJ76-36110A	SHAFT ROLLER-B; VC-DOM,MSWR,L26,OD3.9,ZPC	SA	1
19-5	2	RB044	DJ97-00584S	ASSY WHEEL BACK; SC6780,OD190,3PC,TORCH R	SA	2
19-5-1	3	RB091	DJ67-00517B	CAP-WHEEL; SC6780,ABS,TORCH RED,2 COATING	SA	2
19-6	2	RB051	DJ61-00919A	BODY BASE; SC6500,PP,BLK	SNA	1
20	1	RJ008	DJ97-00171D	ASSY CORD REEL; SC8000,BF3,L6100,1.01	SA	1
20-1	2	RP183	3903-000328	CBF-POWER CORD, AT,GB,BF3,WIRE(2P),250V,1	SA	1
21	1	RB154	DJ63-00530A	GUARD CORD; SC6500,POM,BLK	SA	1
22	1	RA018	DJ97-01135A	ASSY FILTER DUST; SC6750,FOAM,LIGHT GRY	SA	1
22-1	2	RL009	DJ97-01137A	ASSY COVER FILTER; SC6750,BLK,LIGHT GRY	SA	1
22-1-1	3		DJ64-00770A	HANDLE-COVER; SC6750,ABS,LIGHT GRY	SNA	1
22-1-2	3		DJ61-01481B	SPRING ETC-COVER; SC6750,SUS,CD0.6,ID5.3,	SNA	1
22-1-3	3	RB148	DJ63-00509B	GASKET BASE; VCC8450,EVA FOAM,T2.8,L140,B	SA	1
22-1-4	3	RL180	DJ63-00851A	COVER SPONGE; SC6750,ABS,EBONY BLK	SNA	1
22-1-5	3	RL174	DJ63-00632B	GASKET-FILTER; SC6500,PVC,BLK	SNA	1
22-2	2	PA019	DJ97-01159A	ASSY FILTER DUST-SUB; SC6750,MICRO,BLU,WH	SC	1
22-2-1	3	RA087	DJ72-00371A	SPONGE-CYCLONE; SC6750,PU FOAM,T22,BLU,80	SNA	1
22-2-2	3	RA056	DJ63-00533A	FILTER-CYCLONE; SC6500,MICRO,WHT,MICRO-11	SNA	1

No.	Lvl.	Loc.	Material Code	Description & Specification	SNA	Qty.
22-3	2	RA044	DJ61-00923A	CASE-SPONGE; SC6500,PP,BLK	SNA	1
22-4	2	RL174	DJ63-00632B	GASKET-FILTER; SC6500,PVC,BLK	SNA	1

## 2. BRUSH

### Exploded View



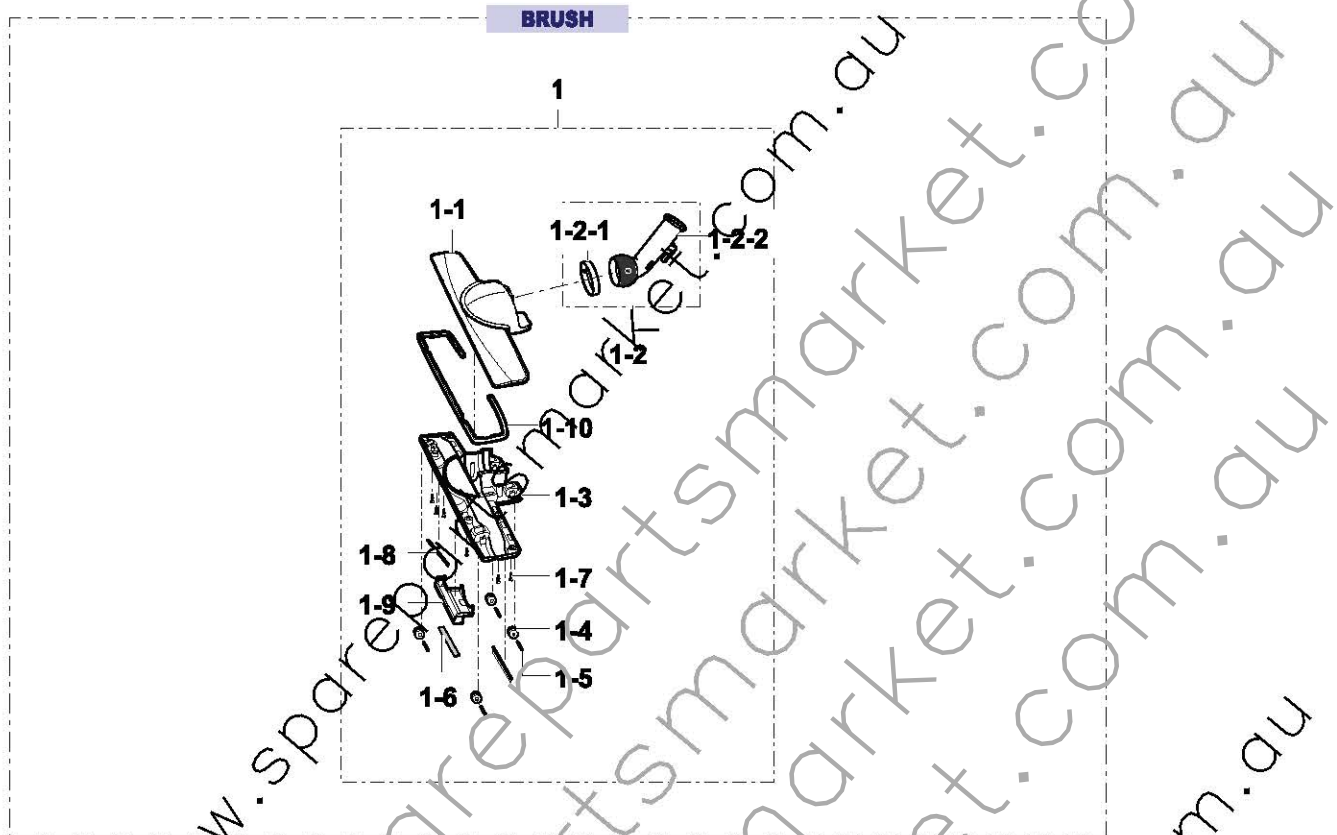
### Parts List

No.	Lvl.	Loc.	Material Code	Description & Specification	SNA	Qty.
1	1	RP016	DJ97-00141D	ASSY BRUSH; -,2STEP,NB-250,BLK,FRICION,E	SA	1
1-1	2	RP087	DJ97-00114A	ASSY PIPE C/BRUSH; -, -,PP,FRFRICION,-,	SA	1
1-2	2	RP195	DJ63-00600A	COVER BRUSH; SC4000,PP,BLK,NB250	SC	1
1-3	2	RP298	DJ66-00177A	SHAFT WHEEL; SC4030,POM,L75,OD5.8,DEEP GR	SA	1
1-4	2	RP512	DJ66-00276A	WHEEL BRUSH; SC4030,PP,OD34.0,ID6.5,BLK,E	SA	2
1-5	2	RL112	DJ66-00275A	LEVER-FOOT; SC4030,ABS,DEEP GR,Y,EPP-PJT	SA	1
1-6	2		DJ97-01936A	ASSY BASE BRUSH; NB-250,BLACK,ASSY	SNA	1
1-6-1	3	RP130	DJ61-00731A	BASE BRUSH; SC4030,PP+TALC30%,BLK	SA	1
1-6-2	3	RP251	DJ61-00733A	WELDER-BRUSH; SC4030,STAINLESS-ST301,T0.	SA	1
1-7	2		DJ97-01935A	ASSY BODY BRUSH; NB-250,ASSY	SNA	1
1-7-1	3	RP148	DJ61-01022A	BODY BRUSH; SC4000,PP,BLK,NB250	SA	1
1-7-2	3	RP164	DJ67-00530A	NOZZLE-BRUSH; VC-R933D,URETHANE,TRP,EXTRU	SA	1

No.	Lvl.	Loc.	Material Code	Description & Specification	SNA	Qty.
1-7-3	3		DJ63-70117B	SPACER-BRUSH; NB300,WOOL,L88,RED,T3,W7.8	SA	2
1-8	2		DJ61-00133B	SPRING ETC-BRAKE; SC4030,HSWR,PI0.5,LD4.5	SNA	1

### 3. BRUSH2

#### Exploded View



#### Parts List

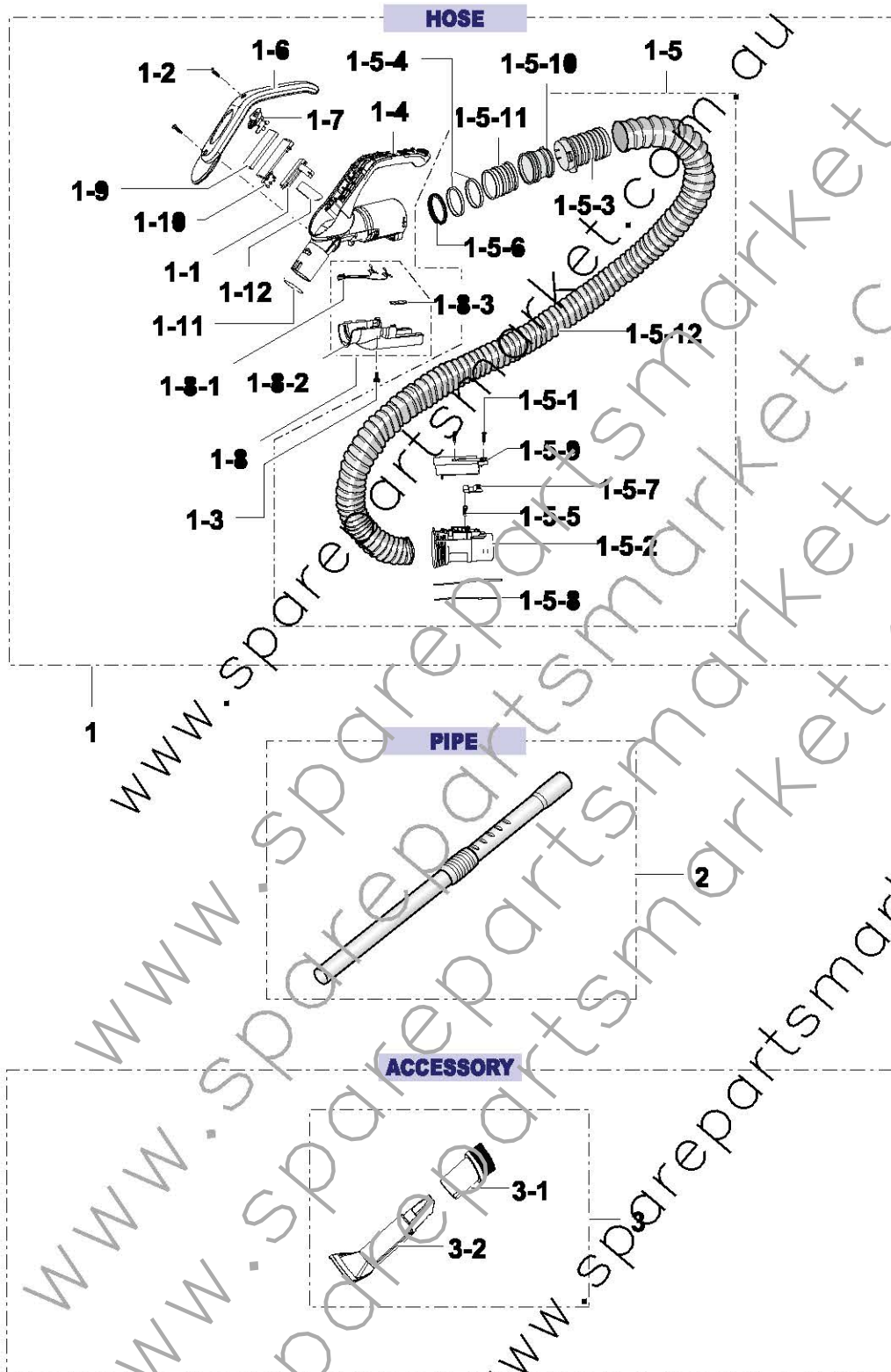
No.	Lvl.	Loc.	Material Code	Description & Specification	SNA	Qty.
1	1	RP012	DJ97-00141H	ASSY BRUSH; -,UNIVERSAL,MB,200,DEEP GRY,F	SC	1
1-1	2	RP191	DJ63-00380V	COVER BRUSH; SC6600,ABS,VC-EXPORT,DEEP GR	SA	1
1-2	2	RP083	DJ97-00064A	ASSY PIPE C/BRUSH; VC-8700,-,ABS,EXP,FRIC	SA	1
1-2-1	3	RP255	DJ61-00138A	HOLDER-CONNECTOR; VC-8600,POM,NTR,SLIM MA	SA	1
1-2-2	3		DJ62-00043A	PIPE-C/BRUSH; VC-8700,ABS,DEEP GRY,WIDE B	SNA	1
1-3	2	RP143	DJ61-00223B	BODY BRUSH; VC-8600,ABS,DEEP GRY,CORDLESS	SA	1
1-4	2	RP108	DJ97-00336A	ASSY ROLLER BRUSH; 2WAY,GRY,OD19	SA	4
1-5	2	RP294	DJ66-00103B	SHAFT ROLLER-B; SATURN-PJT,POM,L26,OD3.9,	SA	4
1-6	2		DJ63-70117B	SPACER-BRUSH; NB300,WOOL,L88,RED,T3,W7.8	SA	1
1-7	2	RV005	6003-000170	SCREW-TAPTYPE; PH,+,-,B,M4,L12,ZPC(WHT),S	SNA	6



No.	Lvl.	Loc.	Material Code	Description & Specification	SNA	Qty.
1-8	2		DJ67-00595A	BRUSH NOZZLE; SC4300,URETHANE,T3.4,W9,L94	SNA	2
1-9	2		DJ61-00187B	HOLDER-SPACER; VC-8700,PP,BLK,WIDE BRUSH/	SNA	1
1-10	2		DJ72-00284B	BAND BRUSH; VC8700,PE,DEEP GRV	SNA	1

## 4. ACCESSORY

### Exploded View



**Parts List**

No.	Lvl.	Loc.	Material Code	Description & Specification	SNA	Qty.
1	1	RL018	DJ97-01942A	ASSY HOSE; SATURN-PJT,SILVER GRAY,L1700,O	SA	1
1-1	2	RP318	2102-001026	VR-SLIDE; 50Kohm,10%,0.1W,TOP	SA	1
1-2	2	RV005	6002-000553	SCREW-TAPPING; PH,+2S,M4,L12,ZPC(BLK),SW	SNA	2
1-3	2	RV005	6003-000167	SCREW-TAPTYPE; PH,+B,M3,L8,ZPC(BLK),SWRC	SNA	1
1-4	2	RL029	DJ61-01219B	BODY H/GRIP; VC-EXPORT,ABS,-,EBONY BLACK,	SA	1
1-5	2	RL020	DJ97-01941A	ASSY HOSE SUB; SC6750,SILVER GRAY,L1700,-	SA	1
1-5-1	3	RV005	6003-000167	SCREW-TAPTYPE; PH,+B,M3,L8,ZPC(BLK),SWRC	SNA	2
1-5-2	3	RL025	DJ61-02025A	BODY CLAMPER; SC6500,PP,-,BLACK	SNA	1
1-5-3	3	RA108	DJ61-01537A	CASE-HOSE; VC-HOSE,PP,BLK	SNA	1
1-5-4	4		DJ71-00009A	TERMINAL-RING; VC-HOSE,C5101P-1/2H	SNA	2
1-5-5	3	RA094	DJ61-70130A	SPRING ETC-CLAMPER; VC-6440,HSWR,PI0.7,ID	SNA	1
1-5-6	3		DJ62-00054A	SEAL-HOLDER; VC-HOSE,NBR,BLK	SNA	1
1-5-7	3	RL104	DJ64-10111G	KNOB-CLAMPER; VC-8700,ABS,-,EBONY BLACK	SC	1
1-5-8	4		DJ71-00010A	PIN PLUG; VC-HOSE,BRASS,PI2.3,33.5,C3712B	SNA	2
1-5-9	3		DJ63-01265A	COVER CLAMPER; SC6500,ABS,-,HB,EBONY BLAC	SNA	1
1-5-10	4		DJ61-00246A	HOLDER HOSE; SC6750,PP,-,NATURAL,-,BJ750,	SNA	1
1-5-11	4		DJ61-00587A	HOLDER-TERMINAL; VC-BMS40,PP+GF10,NTR	SNA	1
1-5-12	4	RL101	DJ67-00693A	HOSE WIRE; SC6750,EVA,OD36.8,OD44.8,L1700	SNA	1
1-6	2	RL069	DJ63-00453A	COVER-H/GRIP; SC7200,ABS,DEEP GRY,NO COAT	SA	1
1-7	2	RB180	DJ64-00150A	KNOB-SLIDE; VC-P900,PC,TRP	SA	1
1-8	2		DJ97-01217B	ASSY COVER-TERMINAL; VC-EXPORT,DEEP GRY,H	SNA	1
1-8-1	3		DJ39-00035H	WIRE HARNESS-T/CLAMPER; VC-HOSE,YEL/GRY,#	SNA	1
1-8-2	3	RL072	DJ63-00391B	COVER-R/TERMINAL; VC-EXPORT,ABS,DEEP GRY	SNA	1
1-8-3	3		DJ72-00198A	COVER TERMINAL-UP; VC-8900,PP,NTR	SNA	1
1-9	2		DJ68-30125G	INLAY-REMOTE; VC-8615H,PVC,W23.5,EXP	SNA	1
1-10	2	RB192	DJ72-20119A	PANEL SLIDE; VC-6500,ABS,LIGHT GRY	SNA	1
1-11	2		DJ62-00279A	SEAL-PIPE; SC6500,NBR,BLK,T4.4,ID31,OD33.	SNA	1
1-12	2		DJ67-00351B	CAP-BODY HANDEL; VC-EXPORT,ABS,DEEP GRY	SNA	1

No.	Lvl.	Loc.	Material Code	Description & Specification	SNA	Qty.
2	1	RP075	DJ97-00852A	ASSY PIPE; LOIRE,TELESCOPIC,STEEL,EXP,FRI	SA	1
3	1	RP001	DJ67-00324A	ASSY ACCESSORY; SC7800,BRUSH,BLK,3 IN 1	SA	1
3-1	2	RA002	DJ67-00325A	ASSY ACCESSORY DUSTING; SC7800,DUSTING,BL	SA	1
3-2	2	RA001	DJ62-00129A	ASSY ACCESSORY CREVICE; SC7800,CREVICE,BL	SA	1